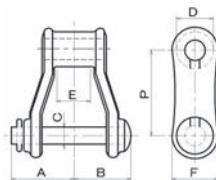


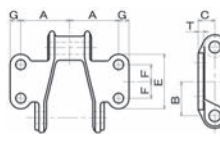
● **Order No. Example**
488L 46-Link
488K - 2L 46-Link

Chain No.

Unit



Plane



K2 Attachment

- ◆ The chain is cast in single pieces, and the pins use carbon steel (S40C equivalent).
- ◆ The standard product pin type can be arbitrarily detached since it has a whirl-stop with an attached head at one side, and a cotter pin stop on the other.
- ◆ The 488L is a product intended for use both front and back, so either can be used. Additionally, using it with an attachment allows it to be used in many different ways.

Chain No.	Pitch P	A	B	C	D	E	F			Average Rupture Strength	Maximum Allowable Weight	Approx. Weight	Unit	
										kg	kg	kg/link	No. of Links	¥
488L	66.27	39.1	35.5	11.1	22.2	24	23.8	-	-	6,900	1,120	0.28	46	

Chain No.	Pitch P	A	B	C	D	E	F	G	T	Average Rupture Strength	Maximum Allowable Weight	Approx. Weight	Unit	
										kg	kg	kg/link	No. of Links	¥
488K-2L	66.27	46.0	32.5	16.7	9.0	54.0	16.0	11.1	4.8	6,900	1,120	0.39	46	



Order Method

Chain No. Unit and Quantity



Postage

Same-day shipping (Unit Only)

* Products with dimensional cutting are shipped in 3 working days.



Guide

* Please contact our sales office if you would like to rearrange the configuration. Since we also manufacture sprockets upon request, please contact our sales office for details.



Precautions

* Dimensional cutting products will be charged as a combination of product price with chain cutting fee included. We will offer support for products incorporating a plane and K-2 for an additional charge of ¥1000. Please give instructions about the content to be built in when you place your order.