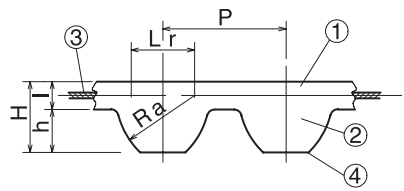


Super Torque Timing Belts



S2M/S3M/S5M/S8M/S14M/MTB



The rational tooth profile design of the belt and pulley allows for improved engagement. A small pulley diameter can be used, allowing for smooth, large transmission.

	Material		
	Super Torque	Super Torque (Polyurethane)	Mega Torque
(1) Belt Rubber	Chloroprene Rubber	Polyurethane	High-hardness synthetic rubber
(2) Tooth Rubber	Chloroprene Rubber	Polyurethane	High-hardness synthetic rubber
(3) Core Wire	Glass Fiber Cord Twisted Alternately in S/Z-Twist	Aramid fiber	Glass fiber
(4) Base fabric	Specially processed nylon canvas	Nylon Canvas	Nylon Canvas

Timing Belt No.	Type	Belt Nominal Width	Material	P	Ra	Lr	H	h	l
Super Torque S2M	STB	40/60/100	Rubber	2	1.3	1.3	1.36	0.76	0.6
	STBU	40/60/100	Polyurethane	2	1.3	1.3	1.36	0.76	0.6
Super Torque S3M	STB	60/100/150	Rubber	3	1.95	1.95	1.94	1.14	0.8
	STBU	60/100/150	Polyurethane	3	1.95	1.95	1.94	1.14	0.8
Super Torque S5M	STB	100/150/250	Rubber	5	3.25	3.25	3.41	1.91	1.5
Super Torque S8M	STB	150/250 300/400	Rubber	8	5.2	5.2	5.3	3.05	2.25
Super Torque S14M	STB	400/600	Rubber	14	9.1	9.1	10.2	5.3	4.9
Mega Torque S8M	MTB	150/250 300/400	Rubber	8	5.2	5.2	5.3	3.05	2.25



Timing Belt No. and Quantity

Type Belt Nominal Width Belt Nominal Length



* S2M/S3M/S5M rubber products can all be converted to sequential bareback specifications.

- (1) Contact our sales office for any further explanations.
- (2) Stock with older specifications will be given priority when shipping.



3-day shipping

5-day shipping (Super Torque S14M only)

* Single order system available

Super Torque Timing Belt <S5M>

● Order No. Example

STB 100 S5M300

Type Belt Nominal Length
Belt Nominal Width

m Material	Belt Nominal Width
STB=Rubber	100=(10mm), 150=(15mm) 250=(25mm)

Type	Belt Nominal Length	No. of Teeth	Belt Pitch Circumference (mm)	¥		
				Rubber		
STB				100	150	250
○	S5M225	45	225			
○	S5M255	51	255			
○	S5M260	52	260			
○	S5M295	59	295			
○	S5M300	60	300			
○	S5M305	61	305			
○	S5M320	64	320			
○	S5M325	65	325			
○	S5M340	68	340			
○	S5M350	70	350			
○	S5M375	75	375			
○	S5M380	76	380			
○	S5M390	78	390			
○	S5M400	80	400			
○	S5M425	85	425			
○	S5M435	87	435			
○	S5M440	88	440			
○	S5M450	90	450			
○	S5M475	95	475			
○	S5M490	98	490			
○	S5M500	100	500			
○	S5M520	104	520			
○	S5M525	105	525			
○	S5M530	106	530			
○	S5M545	109	545			
○	S5M550	110	550			
○	S5M560	112	560			
○	S5M575	115	575			
○	S5M590	118	590			
○	S5M595	119	595			
○	S5M600	120	600			
○	S5M625	125	625			
○	S5M640	128	640			
○	S5M650	130	650			
○	S5M665	133	665			
○	S5M670	134	670			
○	S5M675	135	675			
○	S5M690	138	690			
○	S5M695	139	695			
○	S5M700	140	700			

Type STB	Belt Nominal Length	No. of Teeth	Belt Pitch Circumference (mm)	¥		
				Rubber		
				100	150	250
○	S5M710	142	710			
○	S5M720	144	720			
○	S5M725	145	725			
○	S5M730	146	730			
○	S5M740	148	740			
○	S5M750	150	750			
○	S5M765	153	765			
○	S5M780	156	780			
○	S5M800	160	800			
○	S5M810	162	810			
○	S5M830	166	830			
○	S5M845	169	845			
○	S5M850	170	850			
○	S5M870	174	870			
○	S5M890	178	890			
○	S5M900	180	900			
○	S5M930	186	930			
○	S5M950	190	950			
○	S5M975	195	975			
○	S5M1000	200	1,000			
○	S5M1025	205	1,025			
○	S5M1050	210	1,050			
○	S5M1055	211	1,055			
○	S5M1085	217	1,085			
○	S5M1090	218	1,090			
○	S5M1100	220	1,100			
○	S5M1105	221	1,105			
○	S5M1115	223	1,115			
○	S5M1120	224	1,120			
○	S5M1125	225	1,125			
○	S5M1135	227	1,135			
○	S5M1145	229	1,145			
○	S5M1160	232	1,160			
○	S5M1165	233	1,165			
○	S5M1195	239	1,195			
○	S5M1225	245	1,225			
○	S5M1250	250	1,250			
○	S5M1270	254	1,270			
○	S5M1295	259	1,295			
○	S5M1350	270	1,350			

Super Torque Timing Belt <S5M>



Type STB	Belt Nominal Length	No. of Teeth	Belt Pitch Circumference (mm)	¥		
				Rubber		
				100	150	250
○	S5M1420	284	1,420			
○	S5M1475	295	1,475			
○	S5M1500	300	1,500			
○	S5M1505	301	1,505			
○	S5M1530	306	1,530			
○	S5M1595	319	1,595			
○	S5M1605	321	1,605			
○	S5M1680	336	1,680			
○	S5M1715	343	1,715			
○	S5M1800	360	1,800			
○	S5M2000	400	2,000			
○	S5M2145	429	2,145			
○	S5M2255	451	2,225			
○	S5M2480	496	2,480			