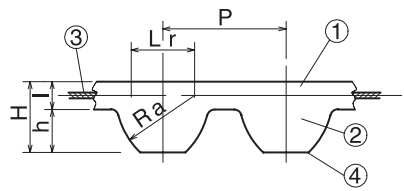


# Super Torque Timing Belts



# S2M/S3M/S5M/S8M/S14M/MTB



The rational tooth profile design of the belt and pulley allows for improved engagement. A small pulley diameter can be used, allowing for smooth, large transmission.

	Material		
	Super Torque	Super Torque (Polyurethane)	Mega Torque
(1) Belt Rubber	Chloroprene Rubber	Polyurethane	High-hardness synthetic rubber
(2) Tooth Rubber	Chloroprene Rubber	Polyurethane	High-hardness synthetic rubber
(3) Core Wire	Glass Fiber Cord Twisted Alternately in S/Z-Twist	Aramid fiber	Glass fiber
(4) Base fabric	Specially processed nylon canvas	Nylon Canvas	Nylon Canvas

Timing Belt No.	Type	Belt Nominal Width	Material	P	Ra	Lr	H	h	l
Super Torque S2M	STB	40/60/100	Rubber	2	1.3	1.3	1.36	0.76	0.6
	STBU	40/60/100	Polyurethane	2	1.3	1.3	1.36	0.76	0.6
Super Torque S3M	STB	60/100/150	Rubber	3	1.95	1.95	1.94	1.14	0.8
	STBU	60/100/150	Polyurethane	3	1.95	1.95	1.94	1.14	0.8
Super Torque S5M	STB	100/150/250	Rubber	5	3.25	3.25	3.41	1.91	1.5
Super Torque S8M	STB	150/250 300/400	Rubber	8	5.2	5.2	5.3	3.05	2.25
Super Torque S14M	STB	400/600	Rubber	14	9.1	9.1	10.2	5.3	4.9
Mega Torque S8M	MTB	150/250 300/400	Rubber	8	5.2	5.2	5.3	3.05	2.25



Timing Belt No.  and Quantity

Type  Belt Nominal Width  Belt Nominal Length



\* S2M/S3M/S5M rubber products can all be converted to sequential bareback specifications.

- (1) Contact our sales office for any further explanations.
- (2) Stock with older specifications will be given priority when shipping.



3-day shipping

5-day shipping  (Super Torque S14M only)

\* Single order system available

# Super Torque Timing Belt <S14M>


## ● Order No. Example

**STB 400 S14M1008**

Type                      Belt Nominal Length  
Belt Nominal Width

Material	Belt Nominal Width
STB=Rubber	400=(40mm), 600=(60mm)

Type STB	Belt Nominal Length	No. of Teeth	Belt Pitch Circumference (mm)	¥	
				Rubber	
				400	600
◎	S14M1008	72	1,008		
◎	S14M1120	80	1,120		
◎	S14M1190	85	1,190		
◎	S14M1246	89	1,246		
◎	S14M1400	100	1,400		
◎	S14M1540	110	1,540		
◎	S14M1610	115	1,610		
◎	S14M1652	118	1,652		
◎	S14M1778	127	1,778		
◎	S14M1806	129	1,806		
◎	S14M1890	135	1,890		
◎	S14M2002	143	2,002		
◎	S14M2100	150	2,100		
◎	S14M2240	160	2,240		
◎	S14M2310	165	2,310		
◎	S14M2380	170	2,380		
◎	S14M2450	175	2,450		
◎	S14M2506	179	2,506		
◎	S14M2590	185	2,590		
◎	S14M2660	190	2,660		
◎	S14M2800	200	2,800		
◎	S14M3150	225	3,150		
◎	S14M3500	250	3,500		
◎	S14M3556	254	3,556		
◎	S14M3850	275	3,850		
◎	S14M4004	286	4,004		
◎	S14M4508	322	4,508		
◎	S14M5012	358	5,012		




and Quantity

Type

Belt Nominal Width

Belt Nominal Length


**5-day shipping**  
\* Single order system available

Postage

Semi-F Series  
 & FITLINK  
 Roller  
 Chains  
 Chain  
 Accessories  
 Idlers &  
 Tensioners  
 Sprockets  
 Oilless  
 Bushings  
 Transmission  
 Accessories  
 Conveyor Chains/  
 Sprockets  
 Chain  
 Couplings  
 Resin Rails  
 Triple Speed/Carve  
 (Transpar) Chains  
 Timing Belts/  
 Pulleys/Flanges  
 Shaft Collars  
 Pinions/Racks/  
 Miter Gears  
 Imperfect  
 Products