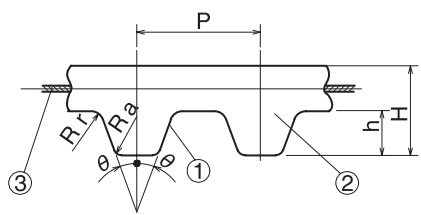


Timing Belt 

MXL/XL/L/H/T5/T10



Compared to chain transmissions, it is much lighter and rotates at higher speeds. Clean transmission with low noise and no need for lubrication.

	Material	
	Rubber	Polyurethane
(1) Tooth surface cover	Specially processed nylon canvas	Polyurethane
(2) Tooth Rubber	Chloroprene Rubber	Polyurethane
(3) Core Wire	Glass Fiber Cord Twisted Alternately in S/Z-Twist	Steel Cord

Timing Belt No.	Type	Belt Nominal	Material	P	2θ	h	H	Rr	Ra
MXL	TB	4.8/6.4/9.5/12.7	Rubber	2.032	40°	0.51	1.11	0.13	0.13
	TBU	6.4/9.5	Polyurethane						
XL	TB	025/031/037/050	Rubber	5.08	50°	1.27	2.27	0.38	0.38
	TBU	025/031/037/050	Polyurethane						
L	TB	050/075/100/150	Rubber	9.525	40°	1.91	3.61	0.51	0.51
	TBU	050/075/100	Polyurethane						
H	TB	075/100/150/200	Rubber	12.7	40°	2.29	4.59	1.00	1.00
T5	TBU	10/15/20/25	Polyurethane	5	40°	1.2	2.2	0.51	0.51
T10	TBU	15/20/25/30/40/50	Polyurethane	10	40°	2.5	4.5	1.00	1.00



Timing Pulley Belt No. and Quantity

Type Belt Nominal Length Belt Nominal Width



* The rubber products can all be converted to sequential bareback specifications.
 (1) Contact our sales office for any further explanations.
 (2) Stock with older specifications will be given priority when shipping.

Timing Pulley Belt No. and Quantity

Type Belt Nominal Width No. of Teeth



3-day shipping

* Single order system available

Super Torque Timing Belt <S2M>

● Order No. Example

STB 40 S2M100
STBU

Type Belt Nominal Width Belt Nominal Length

m Material	Belt Nominal Width
STB=Rubber	40=(4mm), 60=(6mm) 100=(10mm)
STBU=Polyurethane	40=(4mm), 60=(6mm) 100=(10mm)

Type		Belt Nominal Length	No. of Teeth	Belt Pitch Circumference (mm)	¥			¥		
STB	STBU				Rubber			Polyurethane		
					40	60	100	40	60	100
○		S2M76	38	76						
○		S2M78	39	78						
○	○	S2M80	40	80						
○		S2M88	44	88						
○	○	S2M90	45	90						
○	○	S2M100	50	100						
○	○	S2M112	56	112						
○		S2M116	58	116						
○		S2M118	59	118						
○		S2M122	61	122						
○		S2M124	62	124						
○	○	S2M126	63	126						
○		S2M128	64	128						
○		S2M130	65	130						
○		S2M132	66	132						
○		S2M134	67	134						
○	○	S2M138	69	138						
○	○	S2M140	70	140						
○		S2M142	71	142						
○	○	S2M144	72	144						
○		S2M152	76	152						
○	○	S2M160	80	160						
○	○	S2M164	82	164						
○	○	S2M166	83	166						
○	○	S2M172	86	172						
○		S2M176	88	176						
○		S2M180	90	180						
○		S2M186	93	186						
○	○	S2M190	95	190						
○	○	S2M194	97	194						
○	○	S2M200	100	200						
○		S2M204	102	204						
○	○	S2M210	105	210						
○	○	S2M212	106	212						
○		S2M214	107	214						
○	○	S2M218	109	218						
○	○	S2M220	110	220						
○	○	S2M224	112	224						
○	○	S2M230	115	230						
○		S2M234	117	234						
○	○	S2M236	118	236						
○	○	S2M240	120	240						

Super Torque Timing Belt <S2M>



Type	Belt Nominal Length	No. of Teeth	Belt Pitch Circumference (mm)	¥			¥			
				Rubber			Polyurethane			
				40	60	100	40	60	100	
STB	STBU									
	○	S2M242	121	242						
○	○	S2M244	122	244						
○	○	S2M246	123	246						
○	○	S2M250	125	250						
○	○	S2M256	128	256						
○	○	S2M260	130	260						
○	○	S2M266	133	266						
○	○	S2M280	140	280						
○	○	S2M290	145	290						
○	○	S2M300	150	300						
○	○	S2M320	160	320						
○	○	S2M324	162	324						
○	○	S2M328	164	328						
○	○	S2M330	165	330						
○	○	S2M340	170	340						
○	○	S2M360	180	360						
○	○	S2M370	185	370						
○	○	S2M380	190	380						
○	○	S2M396	198	396						
○	○	S2M400	200	400						
○	○	S2M436	218	436						
○	○	S2M448	224	448						
○	○	S2M486	243	486						
○	○	S2M488	244	488						
○	○	S2M500	250	500						
○	○	S2M520	260	520						
○	○	S2M560	280	560						
○	○	S2M572	286	572						
○	○	S2M580	290	580						
○	○	S2M600	300	600						
○	○	S2M630	315	630						
○	○	S2M710	355	710						
○	○	S2M800	400	800						
○	○	S2M900	450	900						
○	○	S2M984	492	984						
○	○	S2M1196	598	1196						
○	○	S2M1250	625	1250						
○	○	S2M1274	637	1274						
○	○	S2M1290	645	1290						