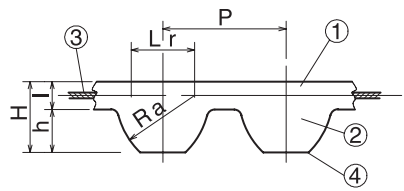




# Super Torque Timing Belts

# S2M/S3M/S5M/S8M/S14M/MTB



The rational tooth profile design of the belt and pulley allows for improved engagement. A small pulley diameter can be used, allowing for smooth, large transmission.

	Material		
	Super Torque	Super Torque (Polyurethane)	Mega Torque
(1) Belt Rubber	Chloroprene Rubber	Polyurethane	High-hardness synthetic rubber
(2) Tooth Rubber	Chloroprene Rubber	Polyurethane	High-hardness synthetic rubber
(3) Core Wire	Glass Fiber Cord Twisted Alternately in S/Z-Twist	Aramid fiber	Glass fiber
(4) Base fabric	Specially processed nylon canvas	Nylon Canvas	Nylon Canvas

Timing Belt No.	Type	Belt Nominal Width	m Material	P	Ra	Lr	H	h	l
Super Torque S2M	STB	40/60/100	Rubber	2	1.3	1.3	1.36	0.76	0.6
	STBU	40/60/100	Polyurethane	2	1.3	1.3	1.36	0.76	0.6
Super Torque S3M	STB	60/100/150	Rubber	3	1.95	1.95	1.94	1.14	0.8
	STBU	60/100/150	Polyurethane	3	1.95	1.95	1.94	1.14	0.8
Super Torque S5M	STB	100/150/250	Rubber	5	3.25	3.25	3.41	1.91	1.5
Super Torque S8M	STB	150/250 300/400	Rubber	8	5.2	5.2	5.3	3.05	2.25
Super Torque S14M	STB	400/600	Rubber	14	9.1	9.1	10.2	5.3	4.9
Mega Torque S8M	MTB	150/250 300/400	Rubber	8	5.2	5.2	5.3	3.05	2.25



Timing Belt No.  and Quantity   
 Type  Belt Nominal Width  Belt Nominal Length



\* S2M/S3M/S5M rubber products can all be converted to sequential bareback specifications.  
 (1) Contact our sales office for any further explanations.  
 (2) Stock with older specifications will be given priority when shipping.



3-day shipping   
 5-day shipping  (Super Torque S14M only)   
 \* Single order system available

# Super Torque Timing Belt <S3M>

## ● Order No. Example

**STB 60 S3M144**  
**STBU** | Belt Nominal Length  
 | Belt Nominal Width

m Material	Belt Nominal Width
STB=Rubber	60=(6mm), 100=(10mm) 150=(15mm)
STBU=Polyurethane	60=(6mm), 100=(10mm) 150=(15mm)

Type		Belt Nominal Length	No. of Teeth	Belt Pitch Circumference (mm)	¥			¥		
STB	STBU				Rubber			Polyurethane		
					60	100	150	60	100	150
○		S3M120	40	120						
○		S3M123	41	123						
○		S3M129	43	129						
○		S3M141	47	141						
○	○	S3M144	48	144						
○		S3M150	50	150						
○	○	S3M162	54	162						
○		S3M171	57	171						
○	○	S3M174	58	174						
○	○	S3M177	59	177						
○	○	S3M180	60	180						
○	○	S3M186	62	186						
○		S3M189	63	189						
○	○	S3M192	64	192						
○		S3M195	65	195						
○	○	S3M201	67	201						
○		S3M207	69	207						
○	○	S3M210	70	210						
○	○	S3M213	71	213						
○	○	S3M219	73	219						
○		S3M222	74	222						
○	○	S3M225	75	225						
○		S3M234	78	234						
○		S3M237	79	237						
○	○	S3M246	82	246						
○	○	S3M249	83	249						
○	○	S3M252	84	252						
○	○	S3M255	85	255						
○	○	S3M264	88	264						
○		S3M273	91	273						
○	○	S3M276	92	276						
○		S3M279	93	279						
○		S3M285	95	285						
○		S3M288	96	288						
○		S3M291	97	291						
○	○	S3M300	100	300						
○	○	S3M312	104	312						
○	○	S3M318	106	318						
○	○	S3M327	109	327						
○		S3M330	110	330						

# Super Torque Timing Belt <S3M>



Type	Belt Nominal Length	No. of Teeth	Belt Pitch Circumference (mm)	¥			¥			
				Rubber			Polyurethane			
				60	100	150	60	100	150	
○		S3M339	113	339						
○	○	S3M345	115	345						
○		S3M354	118	354						
○	○	S3M360	120	360						
○	○	S3M363	121	363						
○	○	S3M369	123	369						
○	○	S3M375	125	375						
○		S3M384	128	384						
○	○	S3M387	129	387						
○		S3M396	132	396						
	○	S3M402	134	402						
○	○	S3M405	135	405						
○	○	S3M408	136	408						
○	○	S3M420	140	420						
○		S3M423	141	423						
○	○	S3M432	144	432						
○	○	S3M453	151	453						
○		S3M456	152	456						
○		S3M459	153	459						
○	○	S3M474	158	474						
○		S3M480	160	480						
○	○	S3M483	161	483						
○		S3M486	162	486						
○	○	S3M501	167	501						
○		S3M507	169	507						
○	○	S3M519	173	519						
○		S3M525	175	525						
○	○	S3M537	179	537						
○	○	S3M540	180	540						
○	○	S3M564	188	564						
○	○	S3M591	197	591						
○	○	S3M600	200	600						
○		S3M612	204	612						
○	○	S3M633	211	633						
○	○	S3M645	215	645						
○		S3M660	220	660						
○	○	S3M681	227	681						
○	○	S3M741	247	741						
○	○	S3M750	250	750						
○		S3M804	268	804						

Type		Belt Nominal Length	No. of Teeth	Belt Pitch Circumference (mm)	¥			¥		
STB	STBU				Rubber			Polyurethane		
					60	100	150	60	100	150
○		S3M810	270	810						
○		S3M852	284	852						
○		S3M900	300	900						
○		S3M918	306	918						
○		S3M1050	350	1,050						
○		S3M1080	360	1,080						
○		S3M1119	373	1,119						
○		S3M1170	390	1,170						
○		S3M1203	401	1,203						
○		S3M1221	407	1,221						
○		S3M1236	412	1,236						
○		S3M1245	415	1,245						
○		S3M1260	420	1,260						
○		S3M1290	430	1,290						
○		S3M1299	433	1,299						
○		S3M1332	444	1,332						
○		S3M1401	467	1,401						
○		S3M1596	532	1,596						
○		S3M1680	560	1,680						
○		S3M1788	596	1,788						
○		S3M2100	700	2,100						