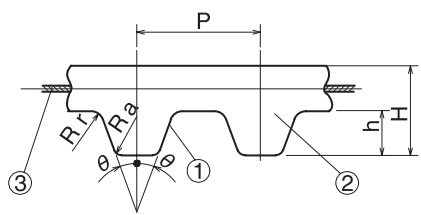


Timing Belt 

MXL/XL/L/H/T5/T10



Compared to chain transmissions, it is much lighter and rotates at higher speeds. Clean transmission with low noise and no need for lubrication.

	Material	
	Rubber	Polyurethane
(1) Tooth surface cover	Specially processed nylon canvas	Polyurethane
(2) Tooth Rubber	Chloroprene Rubber	Polyurethane
(3) Core Wire	Glass Fiber Cord Twisted Alternately in S/Z-Twist	Steel Cord

Timing Belt No.	Type	Belt Nominal	Material	P	2θ	h	H	Rr	Ra
MXL	TB	4.8/6.4/9.5/12.7	Rubber	2.032	40°	0.51	1.11	0.13	0.13
	TBU	6.4/9.5	Polyurethane						
XL	TB	025/031/037/050	Rubber	5.08	50°	1.27	2.27	0.38	0.38
	TBU	025/031/037/050	Polyurethane						
L	TB	050/075/100/150	Rubber	9.525	40°	1.91	3.61	0.51	0.51
	TBU	050/075/100	Polyurethane						
H	TB	075/100/150/200	Rubber	12.7	40°	2.29	4.59	1.00	1.00
T5	TBU	10/15/20/25	Polyurethane	5	40°	1.2	2.2	0.51	0.51
T10	TBU	15/20/25/30/40/50	Polyurethane	10	40°	2.5	4.5	1.00	1.00



Timing Pulley Belt No. and Quantity

Type Belt Nominal Length Belt Nominal Width



* The rubber products can all be converted to sequential bareback specifications.
 (1) Contact our sales office for any further explanations.
 (2) Stock with older specifications will be given priority when shipping.

Timing Pulley Belt No. and Quantity

Type Belt Nominal Width No. of Teeth



3-day shipping

* Single order system available

● Order No. Example

TB 210L 075
TBU | | |
 Type | Belt Nominal Length | Belt Nominal Width

Material	Belt Nominal Width
TB=Rubber	050=(12.7mm), 075=(19.1mm) 100=(25.4mm), 150=(38.1mm)
TBU=Polyurethane	050=(12.7mm), 075=(19.1mm) 100=(25.4mm), 150=(38.1mm)

Type		Belt Nominal Length	No. of Teeth	Belt Pitch Circumference (mm)	¥				¥		
TB	TBU				Rubber				Polyurethane		
					050	075	100	150	050	075	100
○		109L	29	276.23							
○	○	124L	33	314.33							
○		135L	36	342.90							
○	○	150L	40	381.00							
○	○	165L	44	419.10							
○	○	187L	50	476.25							
○	○	210L	56	533.40							
○	○	225L	60	571.50							
○	○	240L	64	609.60							
○	○	255L	68	647.70							
○	○	270L	72	685.80							
○		277L	74	704.85							
○	○	285L	76	723.90							
○	○	300L	80	762.00							
○		320L	85	809.63							
○	○	322L	86	819.15							
○		334L	89	847.73							
○		337L	90	857.25							
○	○	345L	92	876.30							
○		360L	96	914.40							
○	○	367L	98	933.45							
○		375L	100	952.50							
○		382L	102	971.55							
○	○	390L	104	990.60							
○		394L	105	1000.13							
○	○	420L	112	1066.80							
○		427L	114	1085.85							
○	○	450L	120	1143.00							
○	○	480L	128	1219.20							
○	○	510L	136	1295.40							
○		525L	140	1333.50							
○	○	540L	144	1371.60							
○		548L	146	1390.65							
○		581L	155	1476.38							
○	○	600L	160	1524.00							
○		630L	168	1600.20							
○		653L	174	1657.35							
○		660L	176	1676.40							
○		697L	186	1771.65							
○		731L	195	1857.38							