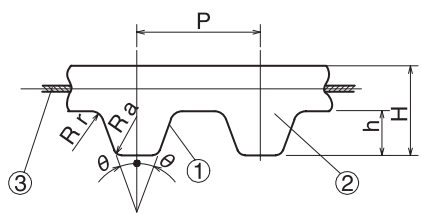


Timing Belt 

MXL/XL/L/H/T5/T10



Compared to chain transmissions, it is much lighter and rotates at higher speeds. Clean transmission with low noise and no need for lubrication.

	Material	
	Rubber	Polyurethane
(1) Tooth surface cover	Specially processed nylon canvas	Polyurethane
(2) Tooth Rubber	Chloroprene Rubber	Polyurethane
(3) Core Wire	Glass Fiber Cord Twisted Alternately in S/Z-Twist	Steel Cord

Timing Belt No.	Type	Belt Nominal	Material	P	2θ	h	H	Rr	Ra
MXL	TB	4.8/6.4/9.5/12.7	Rubber	2.032	40°	0.51	1.11	0.13	0.13
	TBU	6.4/9.5	Polyurethane						
XL	TB	025/031/037/050	Rubber	5.08	50°	1.27	2.27	0.38	0.38
	TBU	025/031/037/050	Polyurethane						
L	TB	050/075/100/150	Rubber	9.525	40°	1.91	3.61	0.51	0.51
	TBU	050/075/100	Polyurethane						
H	TB	075/100/150/200	Rubber	12.7	40°	2.29	4.59	1.00	1.00
T5	TBU	10/15/20/25	Polyurethane	5	40°	1.2	2.2	0.51	0.51
T10	TBU	15/20/25/30/40/50	Polyurethane	10	40°	2.5	4.5	1.00	1.00



Timing Pulley Belt No. and Quantity

Type Belt Nominal Length Belt Nominal Width



* The rubber products can all be converted to sequential bareback specifications.
 (1) Contact our sales office for any further explanations.
 (2) Stock with older specifications will be given priority when shipping.

Timing Pulley Belt No. and Quantity

Type Belt Nominal Width No. of Teeth



3-day shipping

* Single order system available

Timing Belt <H>

● Order No. Example

TB 450H 100

Type | Belt Nominal Width
Belt Nominal Length

mMaterial	Belt Nominal Width
TB=Rubber	075=(19.1mm), 100=(25.4mm) 150=(38.1mm), 200=(50.8mm)

Type TB	Belt Nominal Length	No. of Teeth	Belt Pitch Circumference (mm)	¥			
				Rubber			
				075	100	150	200
○	225H	45	571.50				
○	230H	46	584.20				
○	240H	48	609.60				
○	245H	49	622.30				
○	270H	54	685.80				
○	280H	56	711.20				
○	300H	60	762.00				
○	310H	62	787.40				
○	315H	63	800.10				
○	320H	64	812.80				
○	330H	66	838.20				
○	340H	68	863.60				
○	350H	70	889.00				
○	360H	72	914.40				
○	370H	74	939.80				
○	375H	75	952.50				
○	390H	78	990.60				
○	400H	80	1016.00				
○	410H	82	1041.40				
○	420H	84	1066.80				
○	430H	86	1092.20				
○	450H	90	1143.00				
○	465H	93	1181.10				
○	480H	96	1219.20				
○	490H	98	1244.60				
○	510H	102	1295.40				
○	530H	106	1346.20				
○	540H	108	1371.60				
○	560H	112	1422.40				
○	570H	114	1447.80				
○	600H	120	1524.00				
○	605H	121	1536.70				
○	630H	126	1600.20				
○	640H	128	1625.60				
○	650H	130	1651.00				
○	660H	132	1676.40				
○	680H	136	1727.20				
○	700H	140	1778.00				
○	750H	150	1905.00				
○	770H	154	1955.80				

Type	Belt Nominal Length	No. of Teeth	Belt Pitch Circumference (mm)	¥			
				Rubber			
TB				075	100	150	200
○	800H	160	2032.00				
○	810H	162	2057.40				
○	840H	168	2133.60				
○	850H	170	2159.00				
○	860H	172	2184.40				
○	880H	176	2235.20				
○	900H	180	2286.00				
○	950H	190	2413.00				
○	1000H	200	2540.00				
○	1100H	220	2794.00				
○	1130H	226	2870.20				
○	1250H	250	3175.00				
○	1325H	265	3365.50				
○	1350H	270	3429.00				
○	1400H	280	3556.00				
○	1700H	340	4318.00				