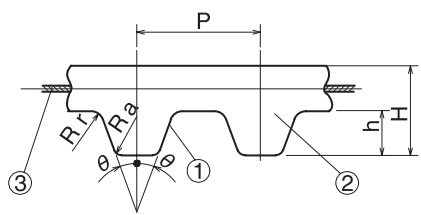


Timing Belt 

MXL/XL/L/H/T5/T10



Compared to chain transmissions, it is much lighter and rotates at higher speeds. Clean transmission with low noise and no need for lubrication.

	Material	
	Rubber	Polyurethane
(1) Tooth surface cover	Specially processed nylon canvas	Polyurethane
(2) Tooth Rubber	Chloroprene Rubber	Polyurethane
(3) Core Wire	Glass Fiber Cord Twisted Alternately in S/Z-Twist	
	Steel Cord	

Timing Belt No.	Type	Belt Nominal	Material	P	2θ	h	H	Rr	Ra
MXL	TB	4.8/6.4/9.5/12.7	Rubber	2.032	40°	0.51	1.11	0.13	0.13
	TBU	6.4/9.5	Polyurethane						
XL	TB	025/031/037/050	Rubber	5.08	50°	1.27	2.27	0.38	0.38
	TBU	025/031/037/050	Polyurethane						
L	TB	050/075/100/150	Rubber	9.525	40°	1.91	3.61	0.51	0.51
	TBU	050/075/100	Polyurethane						
H	TB	075/100/150/200	Rubber	12.7	40°	2.29	4.59	1.00	1.00
T5	TBU	10/15/20/25	Polyurethane	5	40°	1.2	2.2	0.51	0.51
T10	TBU	15/20/25/30/40/50	Polyurethane	10	40°	2.5	4.5	1.00	1.00



Timing Pulley Belt No. and Quantity

Type Belt Nominal Length Belt Nominal Width



* The rubber products can all be converted to sequential bareback specifications.
 (1) Contact our sales office for any further explanations.
 (2) Stock with older specifications will be given priority when shipping.

Timing Pulley Belt No. and Quantity

Type Belt Nominal Width No. of Teeth



3-day shipping

* Single order system available

Timing Belt <T10>



● Order No. Example

TBU T10-15-40

Type No. of Teeth
 └───┬──────────┬──────────┘
 Belt Nominal Width

J T10 Belt nominal width shown in (mm)

m Material	Belt Nominal Width
TBU=Polyurethane	15=(15mm), 20=(20mm)
	25=(25mm), 30=(30mm)
	40=(40mm), 50=(50mm)

Type TBU T10	No. of Teeth	Belt Pitch Circumference (mm)	¥					
			Polyurethane					
			15	20	25	30	40	50
○	40	400						
○	45	450						
○	50	500						
○	53	530						
○	55	550						
○	56	560						
○	60	600						
○	63	630						
○	65	650						
○	70	700						
○	72	720						
○	75	750						
○	80	800						
○	85	850						
○	90	900						
○	91	910						
○	92	920						
○	95	950						
○	96	960						
○	98	980						
○	100	1000						
○	105	1050						
○	110	1100						
○	115	1150						
○	120	1200						
○	125	1250						
○	130	1300						
○	132	1320						
○	135	1350						
○	140	1400						
○	145	1450						
○	150	1500						
○	160	1600						
○	170	1700						
○	175	1750						
○	180	1800						
○	188	1880						