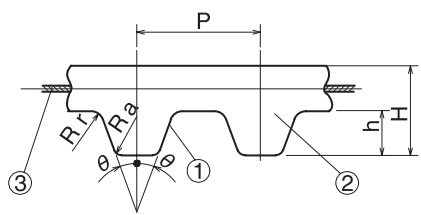


Timing Belt 

MXL/XL/L/H/T5/T10



Compared to chain transmissions, it is much lighter and rotates at higher speeds. Clean transmission with low noise and no need for lubrication.

	Material	
	Rubber	Polyurethane
(1) Tooth surface cover	Specially processed nylon canvas	Polyurethane
(2) Tooth Rubber	Chloroprene Rubber	Polyurethane
(3) Core Wire	Glass Fiber Cord Twisted Alternately in S/Z-Twist	
	Steel Cord	

Timing Belt No.	Type	Belt Nominal	Material	P	2θ	h	H	Rr	Ra
MXL	TB TBU	4.8/6.4/9.5/12.7 6.4/9.5	Rubber Polyurethane	2.032	40°	0.51	1.11	0.13	0.13
XL	TB TBU	025/031/037/050 025/031/037/050	Rubber Polyurethane	5.08	50°	1.27	2.27	0.38	0.38
L	TB TBU	050/075/100/150 050/075/100	Rubber Polyurethane	9.525	40°	1.91	3.61	0.51	0.51
H	TB	075/100/150/200	Rubber	12.7	40°	2.29	4.59	1.00	1.00
T5	TBU	10/15/20/25	Polyurethane	5	40°	1.2	2.2	0.51	0.51
T10	TBU	15/20/25/30/40/50	Polyurethane	10	40°	2.5	4.5	1.00	1.00



Timing Pulley Belt No. and Quantity

Type Belt Nominal Length Belt Nominal Width



* The rubber products can all be converted to sequential bareback specifications.
 (1) Contact our sales office for any further explanations.
 (2) Stock with older specifications will be given priority when shipping.

Timing Pulley Belt No. and Quantity

Type Belt Nominal Width No. of Teeth



3-day shipping


* Single order system available

Timing Belt <T5>

● Order No. Example

TBU T5-10-37



 T5 Belt nominal width shown in (mm)

mMaterial	Belt Nominal Width
TBU=Polyurethane	10=(10mm), 15=(15mm) 20=(20mm), 25=(25mm)

Type	No. of Teeth	Belt Pitch Circumference (mm)	¥			
			Polyurethane			
TBU T5			10	15	20	25
○	37	185				
○	40	200				
○	45	225				
○	50	250				
○	55	275				
○	56	280				
○	59	295				
○	60	300				
○	65	325				
○	70	350				
○	75	375				
○	80	400				
○	85	425				
○	88	440				
○	90	450				
○	95	475				
○	100	500				
○	105	525				
○	110	550				
○	115	575				
○	118	590				
○	120	600				
○	125	625				
○	126	630				
○	130	650				
○	135	675				
○	138	690				
○	140	700				
○	145	725				
○	150	750				
○	156	780				
○	160	800				
○	170	850				
○	180	900				
○	200	1000				
○	215	1075				
○	218	1090				
○	220	1100				
○	223	1115				
○	243	1215				
○	270	1350				
○	276	1380				