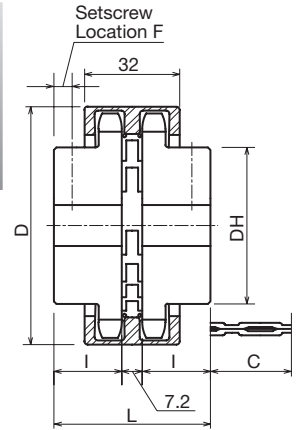
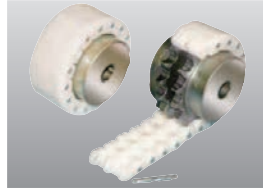


Plastic Chain Coupling

● Order No. Example **CE416S Set** **CE416 Chain Only**

Coupling No.



The KANA plastic chain coupling is a flexible coupling consisting of an assembly of 1 plastic chain and 2 sprockets. Clean transmission is possible without the necessity for grease.

Coupling S	m Material	h Heat Treatment	s Surface Treatment
Chain	Polyacetal Resin	-	-
Sprocket	Carbon Steel	High-frequency Hardened Teeth	UniChrome Plating (trivalent)
Joint Pin	Common Steel	-	UniChrome Plating (trivalent)

Coupling No.	Shaft Diameter		Moment of inertia $\times 10^{-3}$ $\text{kg}\cdot\text{m}^2$	$\text{GD}^2 \times 10^{-3}$	Dimensions						Approx. Weight kg	¥	
	Prepared Holes	Maximum Shaft Diameter			D	DH	L	I	F	C		Coupling S	Replaceable Chain
CE410	9.5	18	0.08	0.33	51.8	* 32	51.2	22	5	22.8	0.35		
CE411	10.5	20	0.12	0.47	55.9	* 36	51.2	22	5	22.8	0.46		
CE412	10.5	22	0.17	0.67	60.1	* 40	51.2	22	5	22.8	0.53		
CE413	13.5	25	0.20	0.78	64.2	37	51.2	22	6	22.8	0.55		
CE414	13.5	28	0.27	1.08	68.3	42	51.2	22	6	22.8	0.66		
CE415	13.5	30	0.36	1.43	72.4	46	51.2	22	6	22.8	0.79		
CE416	13.5	32	0.47	1.86	76.5	50	51.2	22	6	22.8	0.92		
CE417	13.5	35	0.59	2.37	80.6	54	51.2	22	6	22.8	1.0		
CE418	13.5	40	0.73	2.93	84.7	57	51.2	22	6	22.8	1.1		
CE419	13.5	40	0.94	3.74	88.8	62	51.2	22	6	22.8	1.3		
CE420	14.5	45	1.27	5.09	93.0	67	57.2	25	7	19.8	1.6		
CE421	14.5	45	1.56	6.23	97.1	71	57.2	25	7	19.8	1.9		
CE422	14.5	50	1.89	7.55	101.1	75	57.2	25	7	19.8	2.0		
CE424	14.5	42	1.84	7.35	109.3	63	57.2	25	7	19.8	1.8		
CE426	14.5	42	2.32	9.29	117.4	63	57.2	25	7	19.8	2.0		
CE430	14.5	42	3.65	14.61	133.6	63	57.2	25	7	19.8	2.4		



Order Method

Coupling No. and Quantity



Precautions

- * The moment of inertia, GD^2 , is for the prepared hole case.
- * Prepared holes have been finished for the dimensions shown and smaller.
- * Sprockets with a * symbol have a groove in the boss outer diameter.
- * A specially plated sprocket with smoothly finished tooth sections is used for the plastic chain coupling.



Postage

10-day shipping

* Single order system available