

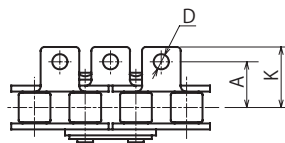
KCM Roller Chains with Attachments

A1-type Attachments

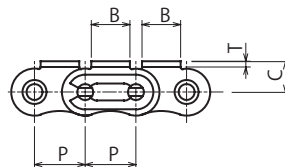
● Order Product Code

KCM40- ALL A1 240 Links 10ft

Chain No. Configuration Type Unit



40-ALLA1T



Chains where attachments are attached to roller chains. Dimensions comply with JIS. Can be used as a highly accurate small conveyor type.

Chain No.	Attachment		Plate Thickness T	D	Attachment				Average Tensile Strength kN (kgf)	Maximum Allowable Tension kN (kgf)
	Configuration	Type			A	B	C	K		
KCM 40			1.5	3.6	12.7	9.5	7.9	17.4	17.2 (1,750)	2.75 (280)
KCM 50	ALL	A1	2.0	5.2	15.9	12.7	10.3	22.3	27.9 (2,850)	4.41 (450)
	2L									
	3L									
KCM 60	4L		2.4	5.2	19.05	15.9	11.9	27.2	39.5 (4,000)	6.28 (640)
	6L									
KCM 80				3.2	6.8	25.40	19.1	15.9	35.2	68.6 (7,000)



* There are no OL for chains with attachments.

Caution

Chain No.	Configuration	Type	Product Code	Applied Approx Weight g per Attachment Location	Approx. Weight kg/m	No. of Links	Standard Issue	No. in Box (Units or Items)
KCM 40	ALL	A1	40-ALLA1T	1.4	0.61	240L	3m	8
	2L		40-2LA1T					
	3L		40-3LA1T					
	4L		40-4LA1T					
	6L		40-6LA1T					
	--		40-A1JL					
KCM 50	ALL	A1	50-ALLA1T	3.2	1.01	192L	3m	5
	2L		50-2LA1T					
	3L		50-3LA1T					
	4L		50-4LA1T					
	--		50-A1JL					
KCM 60	ALL	A1	60-ALLA1T	5.6	1.49	160L	3m	4
	2L		60-2LA1T					
	3L		60-3LA1T					
	4L		60-4LA1T					
	--		60-A1JL					
KCM 80	ALL	A1	80-ALLA1T	13.0	2.50	120L	3m	3
	2L		80-2LA1T					
	3L		80-3LA1T					
	4L		80-4LA1T					
	--		80-A1JL					