

# KCM Stainless Steel Roller Chains with Attachments

## Stainless Steel A1-type Attachments

### Order Product Code

**KCM40- SUS 2L A1 240 Links 10ft**

Chain No.      Material      Configuration      Type      Unit

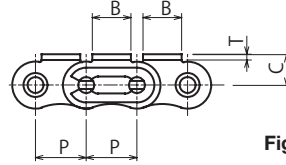
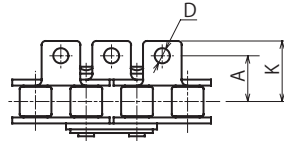


Figure: ALL A1

Stainless steel chains where attachments are attached to roller chains. Dimensions comply with JIS. Can be used as a highly accurate small conveyor type.

Chain No.	Attachment		Plate Thickness T	D	Attachment				Maximum Allowable Tension kN (kgf)	
	Configuration	Type			A	B	C	K		
KCM 40	ALL	A1	1.5	3.6	12.7	9.5	7.9	17.4	0.44 ( 45)	
KCM 50			2L	2.0	5.2	15.9	12.7	10.3	22.3	0.69 ( 70)
KCM 60			3L	2.4	5.2	19.05	15.9	11.9	27.2	1.03 (105)
KCM 80			4L	3.2	6.8	25.40	19.1	15.9	35.2	1.77 (180)
		6L								

Chain No.	Attachment		Approx. Weight kg/m	Unit	
	Attached per Location			No. of Links	m
	Approx. Weight g				
KCM 40	1.4		0.63	240L	3
KCM 50	3.2		1.04	192L	
KCM 60	5.6		1.50	160L	
KCM 80	13.0		2.62	120L	



\* There are no OL for chains with stainless steel attachments.

Caution