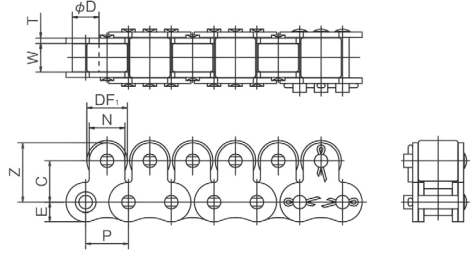


KCM Chains with Top Roller

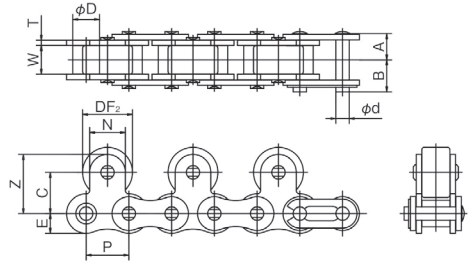
A chain with transportation rollers is installed above the center of the chain pitch and can be used for transport/accumulation as chains with side rollers can.

Just as with side rollers, the top roller material is available in standard steel, engineered plastic or rubber tire.

Top roller mounting interval for 1P is



Top roller mounting interval for 2P is



(Units: mm)

Chain No.	Pitch P	Inner Link Inner Width W	Roller Outer Diameter D	Pin			Attachment							Approx. Mass (kg/m)			
				Diameter d	A	B	Top Roller		C	Z	N	E	Steel		Plastic		
							DF ₁	DF ₂					1P	2P	1P	2P	
KCM 40	12.70	7.95	7.92	3.97	8.07	9.48	11.0	15.88	12.7	17.45	9.5	5.9	1.83	1.41	0.92	0.85	
KCM 50	15.875	9.53	10.16	5.09	10.17	11.63	15.0	19.05	15.9	22.25	12.7	7.3	2.39	2.18	1.56	1.38	
KCM 60	19.05	12.70	11.91	5.96	12.70	14.20	18.0	22.23	18.3	26.25	15.9	8.8	3.60	3.18	2.30	2.03	
KCM 80	25.40	15.88	15.88	7.94	16.15	19.25	24.0	28.58	24.6	34.15	19.1	11.5	6.09	5.27	3.90	3.44	
KCM 100	31.75	19.05	19.05	9.54	20.10	23.05	30.0	39.69	31.8	44.50	25.4	14.5	9.30	8.85	6.06	5.41	

Coupler links of 80 or more are cotter pin type.