

KCM Special Configuration Roller Chains with Attachments

An unlimited number of attachment combinations!

Supports a wide range of configurations. We provide JAPAN QUALITY KCM roller chains that meet the unique needs of our customers through rearranging configurations with KCT. We offer quick delivery of high quality and highly reliable roller chains.

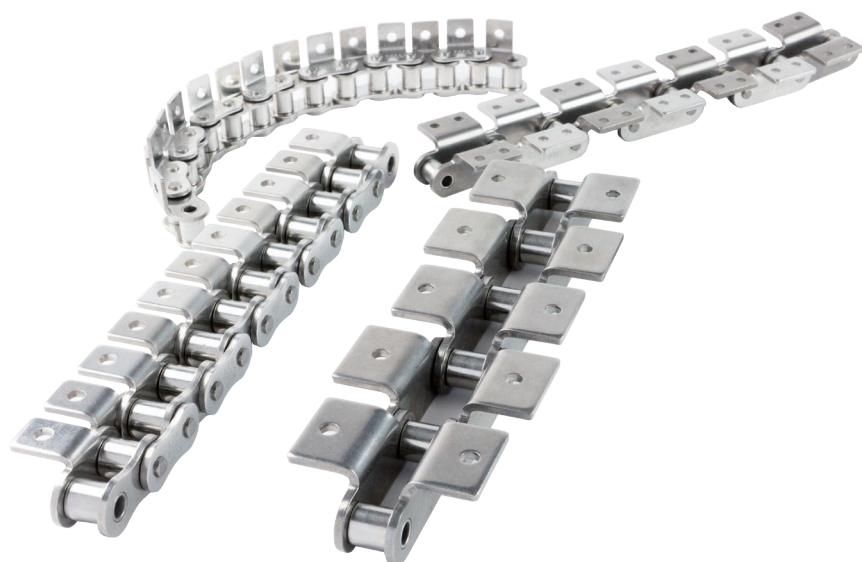
Various attachment shapes



Various configurations



Combinations are limitless

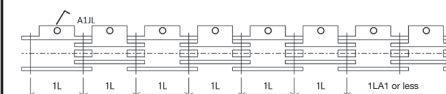


Shipped out as soon as five days after order is placed

How can we ship so quickly?

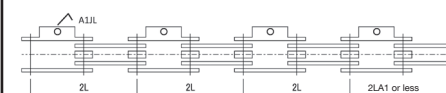
1. We have our own assembly equipment on site, so we can quickly handle everything from the initial order to shipment in-house.
2. We keep each attachment in stock so that we can configure products immediately after receiving an order.
3. Everything is handled under Japanese management for peace of mind. Just leave it to us!

Special Configuration Attachments



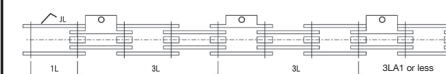
ALL

Attachments connected to all links



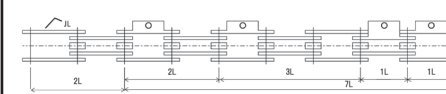
2L

Attachments connected every two links



3L

Attachments connected every three links



Special configuration

Can be combined in various configurations

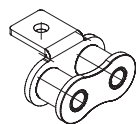
◇ List of compatible roller chains and attachment shapes

Iron	Stainless Steel	Attachment Shape							
		Single Blade				Double Blade			
		A1	A2	SA1	SA2	K1	K2	SK1	SK2
KCM35	KCM35SUS	○	×	○	×	○	×	○	×
KCM40	KCM40SUS	○	×	○	×	○	×	○	×
KCM50	KCM50SUS	○	×	○	×	○	×	○	×
KCM60	KCM60SUS	○	×	○	×	○	×	○	×
KCM80	KCM80SUS	○	×	○	×	○	×	○	×
KCM100	KCM100SUS	○	×	○	×	○	×	○	×
C2040	C2040-SUS	○	○	○	○	○	○	○	○
C2042	C2042-SUS	○	○	○	○	○	○	○	○
C2050	C2050-SUS	○	○	○	○	○	○	○	○
C2052	C2052-SUS	○	○	○	○	○	○	○	○
C2060H	C2060H-SUS	○	○	○	○	○	○	○	○
C2062H	C2062H-SUS	○	○	○	○	○	○	○	○
C2080H	C2080H-SUS	○	○	○	○	○	○	○	○
C2082H	C2082H-SUS	○	○	○	○	○	○	○	○
--	40SSP	○	×	○	×	○	×	○	×
--	50SSP	○	×	○	×	○	×	○	×
--	60SSP	○	×	○	×	○	×	○	×
--	80SSP	○	×	○	×	○	×	○	×

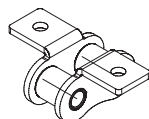
▶ *Refer to P.46 to P.47 for information on SSP chains.

KCM Special Configuration Roller Chains with Attachments

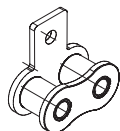
Special Configuration Attachments



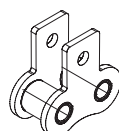
A-1 Attachment



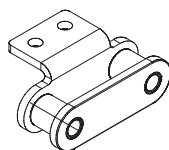
K-1 Attachment



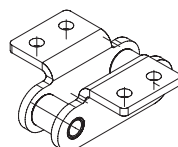
SA-1 Attachment



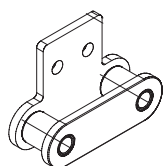
SK-1 Attachment



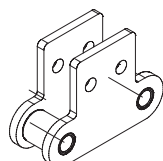
A-2 Attachment



K-2 Attachment

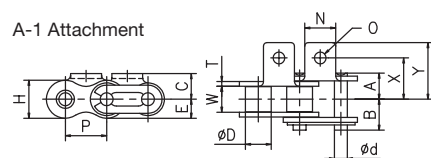


SA-2 Attachment

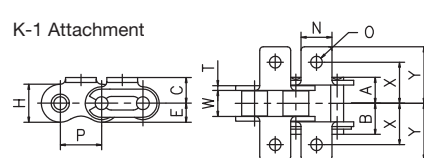


SK-2 Attachment

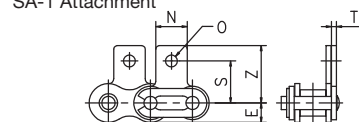
A-1 Attachment



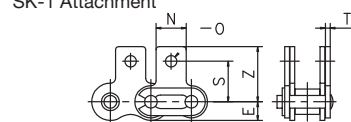
K-1 Attachment



SA-1 Attachment



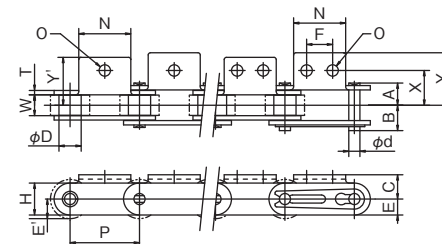
SK-1 Attachment



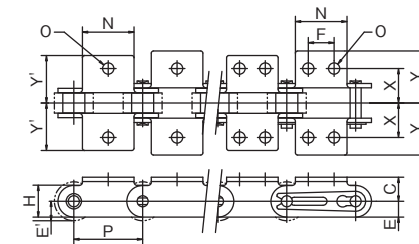
Chain No.	Attachment								Applied Load per Attachment (kg)	
	N	O	E	C	X	Y	S	Z	A,SA-1	K,SK-1
KCM35	7.9	3.4	4.4	6.35	9.5	13.8	9.5	14.25	0.0009	0.0018
KCM40	9.5	3.6	5.8	7.9	12.7	17.4	12.7	17.3	0.0014	0.0028
KCM50	12.7	5.2	7.3	10.3	15.9	22.3	15.9	22.3	0.0032	0.0062
KCM60	15.9	5.2	8.8	11.9	19.05	27.2	18.25	26.3	0.0056	0.012
KCM80	19.1	6.8	11.5	15.9	25.4	35.2	24.6	34.2	0.013	0.026
KCM100	25.4	8.7	14.4	19.85	31.75	44.7	31.75	44.1	0.025	0.05

*Stainless steel types have the same dimensions.

A-1 A-2 Attachment



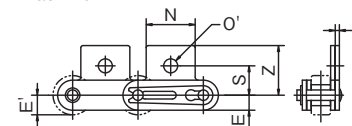
K-1 K-2 Attachment



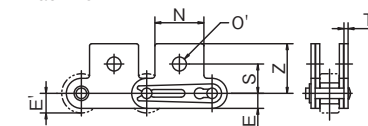
Chain No.	Attachment								Applied Load per Attachment (kg)	
	N	O	C	E (E')	X	Y	Y'	F	A-1, A-2	K-1, K-2
C2040	19.1	3.6	9.1	5.9 (7.9)	12.7	19.0	17.4	9.5	0.003	0.006
C2042										
C2050	23.8	5.2	11.1	7.3 (9.5)	15.9	24.0	21.9	11.9	0.007	0.014
C2052										
C2060H	28.6	5.2	14.7	8.8 (11.1)	21.45	31.8	28.4	14.3	0.016	0.032
C2062H										
C2080H	38.1	6.8	19.1	11.5 (14.3)	27.8	41.1	37.0	19.1	0.033	0.066
C2082H										

*Stainless steel types have the same dimensions.

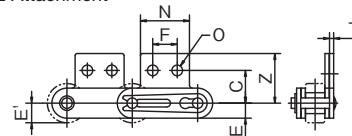
SA-1 Attachment



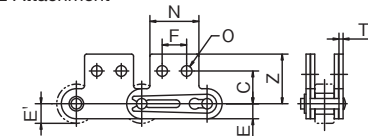
SK-1 Attachment



SA-2 Attachment



SK-2 Attachment



Chain No.	Attachment								Applied Load per Attachment (kg)	
	N	O	O'	C	S	E (E')	Z	F	SA-1, SA-2	SK-1, SK-2
C2040	19.1	3.6	5.2	13.5	11.1	5.9 (7.9)	19.75	9.5	0.003	0.006
C2042										
C2050	23.8	5.2	6.8	15.9	14.25	7.3 (9.5)	24.55	11.9	0.006	0.012
C2052										
C2060H	28.6	5.2	6.7	19.05	17.5	8.8 (11.1)	31.05	14.3	0.016	0.032
C2062H										
C2080H	38.1	6.8	10.3	25.4	22.2	11.5 (14.3)	40.8	19.1	0.031	0.062
C2082H										

*Stainless steel types have the same dimensions.