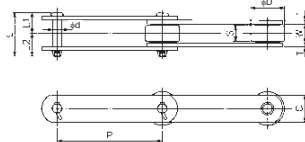


Inch-Pitch Conveyor Chain

● Order No. Example KTE3400R 100-Link

Chain No. Chain Length

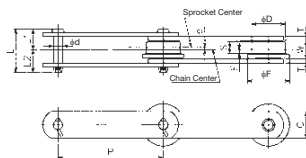


Regular Series

Chain No.	Pitch P	Roller Shape	Roller		Inner Link Inner Width W	Plate		Pin			Approx. Mass (kg/m)		Average Tensile Strength kN(kgf)
			Diameter D	Rail contact width S		Width C	Thickness T	Diameter d	Length L	Dimension L1	Dimension L2	S	
KTE3400	101.60	R	38.1	18.7	22.2	25.4	4.8 (4.5)	9.53	51	24	27	4.3	53.9 (5,500)
KTE5400	101.60	R	44.45	23.5	27	28.6	6.3 (6.0)	11.11	63	30	33	6.7	83.3 (8,500)
KTE5600	152.40	R	50.8	26.5	30	38	6.3 (6.0)	11.11	66	31.5	34.5	7.8	137.2 (14,000)
KTE9400	101.60	R	44.45	27.5	31	38	7.9 (8.0)	15.88	78.5	37	41.5	10.4	186.2 (19,000)
KTE12600	152.40	R	57.2	31.5	36.5	45	7.9 (8.0)	15.88	85.5	39.5	46	12.1	245 (25,000)
KTE17600	152.40	R	69.9	31.5	36.5	50.8	9.5 (9.0)	19.05	96.1	43.8	52.3	17.1	

● Order No. Example KTE3400F 100-Link

Chain No. Chain Length

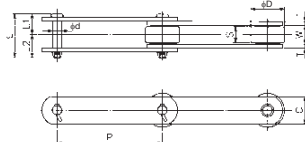


Regular Series

Chain No.	Pitch P	Roller Shape	Roller					Inner Link Inner Width W	Plate		Pin			Approx. Mass (kg/m)		Average Tensile Strength kN(kgf)
			Diameter D	Flange Diameter F	Rail contact width S	E	Core Distance e		Width C	Thickness T	Diameter d	Length L	Dimension L1	Dimension L2	S	
KTE3400	101.60	F	38.1	50	13	4	2.5	22.2	25.4	4.8 (4.5)	9.53	51	24	27	4.7	53.9 (5,500)
KTE5400	101.60	F	44.5	55	18	6.5	2.5	27.0	28.6	6.3 (6.0)	11.11	63	30	33	6.9	83.3 (8,500)
KTE5600	152.40	F	50.8	65	20	7	3.0	30.0	38	6.3 (6.0)	11.11	66	31.5	34.5	8.1	137.2 (14,000)
KTE9400	101.60	F	44.45	60	19.5	6	3.8	31.0	38	7.9 (8.0)	15.88	78.5	37	41.5	10.7	186.2 (19,000)
KTE12600	152.40	F	57.2	75	25	9	3.5	36.5	45	7.9 (8.0)	15.88	85.5	39.5	46	12.4	245 (25,000)
KTE17600	152.40	F	69.9	90	23.5	8	3.8	36.5	50.8	9.5 (9.0)	19.05	96.1	43.8	52.3	17.6	

● Order No. Example KTE3400S 100-Link

Chain No. Chain Length



Regular Series

Chain No.	Pitch P	Roller Shape	Roller		Inner Link Inner Width W	Plate		Pin			Approx. Mass (kg/m)		Average Tensile Strength kN(kgf)	
			S Roller	M Roller		Width C	Thickness T	Diameter d	Length L	Dimension L1	Dimension L2	S		M
KTE3400-S	101.60	S	20.1	-	22.2	25.4	4.8 (4.5)	9.53	51	24	27	3.0	-	53.9 (5,500)
KTE5261-S	66.27	S	22.2	-	27	28.6	6.3 (6.0)	11.11	63	30	33	5.6	-	83.3 (8,500)
KTE5400-S	101.60	S	22.2	-	27	28.6	6.3 (6.0)	11.11	63	30	33	4.6	-	
KTE5600-S/M	152.40	S/M	25.8	31.75	30	38	6.3 (6.0)	11.11	66	31.5	34.5	5.7	6.1	
KTE7400-S	101.60	S	25.8	-	28.6	38	6.3 (6.0)	12.70	66	31	35	6.5	-	98 (10,000)
KTE9307-S	78.11	S	31.75	-	36.5	38	7.9 (8.0)	14.29	81.5	39	42.5	10.3	-	117.6 (12,000)
KTE9400-S/M	101.60	S/M	31.75	34.93	31	38	7.9 (8.0)	15.88	78.5	37	41.5	8.7	9.1	137.2 (14,000)
KTE12600-S/M	152.40	S/M	34.93	38.1	36.5	45	7.9 (8.0)	15.88	85.5	39.5	46	9.3	9.6	186.2 (19,000)
KTE17600-S/M	152.40	S/M	40.08	44.45	36.5	50.8	9.5 (9.0)	19.05	96.1	43.8	52.3	12.6	13.0	245 (25,000)



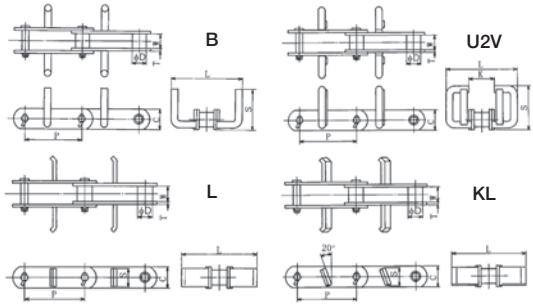
- * High-strength series, stainless steel, to meet all requirements.
- * Contact our sales offices for inquiries or to place orders.
- * The values () in the dimensions are for the High-strength type and the SUS300/400 Series.
- * For Grade 5000 or less, we have used a cotter type as standard, but the rivet type is also available.
- * For Grade 7000 or more, we have used a cotter type as standard.

FL Conveyor Chain

● Order No. Example

KTE5400W-M 2L B Attachment 100-Link

Chain No. Attachment Mounting Interval Attachment Type Chain Length



The FL conveyor is ideal for preventing dust pollution since it transports powder and granular material inside a sealed case. The product is a chain specialized for use with conveyors for which you can choose attachments depending on the objects to be transported.

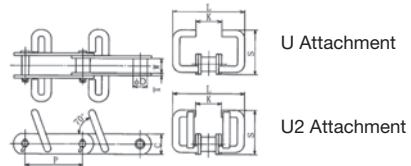
Horizontal FL Conveyor Chain Part Dimensions

Chain No.	Pitch P	Roller Diameter D	Inner Link Inner Width W	Plate			B Attachment			U2V Attachment				L Attachment			KL Attachment			Average Tensile Strength kN {kgf}	
				Width C	Thickness T	Blade Width L	Blade Height S	Mass (kg/m)	Blade Width L	Blade Height S	K	Mass (kg/m)	Blade Width L	Blade Height S	Mass (kg/m)	Blade Width L	Blade Height S	Mass (kg/m)	Normal Series	High-Strength Type Series	
KTE5400W-M	101.6	25.4	27	32	6.0	135	55	7.4	135	80	60	9.1	135	28	6.5	135	28	6.5	107.87 (11,000)	142.2 (14,500)	
KTM8125W-M	125	25.4	27	32	6.0	185	80	8.2	185	115	85	10.1	185	28	6.5	185	28	6.5	107.87 (11,000)	142.2 (14,500)	
KTM10125-M	125	31.75	30	38	6.3	185	80	8.9	185	115	85	10.9	185	34	8.1	185	34	8.1	112.75 (11,500)	225.49 (23,000)	
KTM10150-M	150	31.75	30	38	6.3	250	100	9.8	250	140	105	12	250	34	8.1	250	34	8.1	112.75 (11,500)	225.49 (23,000)	
KTE9400-M	101.6	34.93	31	38	7.9	135	55	10.2	-	-	-	-	185	34	10.5	185	34	10.5	137.25 (14,000)	274.57 (28,000)	
KTE12600-M	152.4	38.1	36.5	45	7.9	250	100	14.4	250	140	105	18.5	250	38	12	250	38	12	186.32 (19,000)	274.57 (28,000)	
KTM12200-M	200	38.1	36.5	45	7.9	330	125	16.3	330	185	130	20	330	38	12	330	38	12	186.32 (19,000)	274.57 (28,000)	

● Order No. Example

KTE5400W-M 2L U Attachment 100-Link

Chain No. Attachment Mounting Interval Attachment Type Chain Length



Tilt/Vertical FL Conveyor Chain Part Dimensions

Chain No.	Pitch P	Roller Diameter D	Inner Link Inner Width W	Plate			U Attachment				U2 Attachment				Average Tensile Strength kN {kgf}				
				Width C	Thickness T	Blade Width L	Blade Height S	K	Mass (kg/m)	Blade Width L	Blade Height S	K	Mass (kg/m)	Normal Series	High-Strength Type Series				
KTE5400W-M	101.6	25.4	27	32	6.0	145	110	50	10.1	145	110	50	10.9	145	110	50	10.9	107.87 (11,000)	142.2 (14,500)
KTM10125-M	125	31.75	30	38	6.3	225	140	65	14.3	225	140	65	15.7	225	140	65	15.7	112.75 (11,500)	225.49 (23,000)
KTE12600-M	152.4	38.1	36.5	45	7.9	300	175	80	20.1	300	175	80	21.7	300	175	80	21.7	186.32 (19,000)	274.57 (28,000)



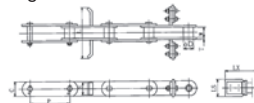
* The basic specification for the chain is identical to the KTM/KTE standard conveyor chain.
 * Manufacture of the high-strength series is also possible. * Please inquire at our sales office.

FL Conveyor Chain/Apron Conveyor Chain

● Order No. Example

KTE3400-S 2L L Attachment 100-Link

Chain No. Attachment Mounting Interval Attachment Type Chain Length



Grain Transporting FL Conveyor Chain Part Dimensions

L Attachment (with attached cleaner)

Chain No.	Pitch P	Roller Diameter D	Inner Link Inner Width W	Plate		Attachment		Cleaner		Approx. Mass (kg/m)	Average Tensile Strength kN {kgf}
				Width C	Thickness T	Blade Width L	Height S	Width LX	Height S		
KTE3400-S	101.6	20.1	22.2	25.4	4.8	135	22	145	32	3.4	53.92 (5,500)
KTE5400-S	101.6	22.2	27	28.6	6.3	135	25	145	34	5.0	83.33 (8,500)
KTM8125-S	125	22.2	27	28.6	6.3	185	25	195	34	5.0	83.33 (8,500)
KTM10125-S	125	30	30	38	6.3	185	34	195	47	6.8	112.75 (11,500)
						225		235			
KTM10150-S	150	30	30	38	6.3	250	34	265	47	6.9	112.75 (11,500)
						300		315			
KTE12600-S	152.4	34.93	36.5	45	7.9	250	38	265	53	10.3	186.32 (19,000)
KTM12200-S	200	34.93	36.5	45	7.9	330	38	345	53	10.1	186.32 (19,000)

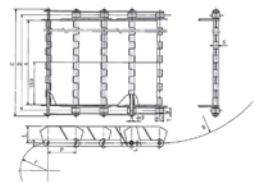


* The basic specification for the chain is identical to the KTM/KTE standard conveyor chain.
 * Manufacture of the high-strength series is also possible. * Please inquire at our sales office.
 * For Grade 7000 or more, we have used a cotter type as standard.

● Order No. Example

KHEC3075-R/F/S 150 100-Link

Chain No. Roller Type Apron Width Chain Length



A conveyor chain for transportation that you can use over an extensive range of applications from transporting very small objects to large objects. Feel free to ask us about special sizes which are not included in the dimensions as well.

Apron Conveyor Chain Part Dimensions

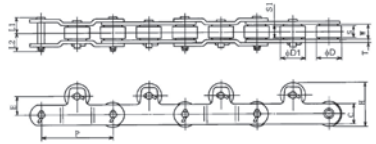
Chain No.	Apron Width A	Side Chain: Center Distance B	Chain Outer Width C	Side Link Height L	Hinge Plate Thickness t	Dimensions S	Side Chain						Minimum Upper Bending Radius R	Minimum Lower Bending Radius r	Average Tensile Strength		Approx. Mass (kg/m)	
							Number	Pitch P	Roller Diameter D	Inner Link Inner Width W	Plate C	T			Pin Diameter d	kN		kgf
KHEC3075-R/F/S	150	188.4	227.3	40	2.0	16.4	KTM3075-R/F/S	75	30	18	22	3.2	7.94	300	75	58.8	6,000	13.0
	300	338.4	377.3															17.5
	450	488.4	527.3															22.4
KHEC3100-R/F/S	150	188.4	227.3	60	2.0	16.4	KTM3100-R/F/S	100	30	18	22	3.2	7.94	450	100	58.8	6,000	12.7
	300	338.4	377.3															16.9
	450	488.4	527.3															21.1
KHEC150-R/F/S	150	200.4	252.7	80	3.2	26.0	KTM5150-R/F/S	150	40	22.2	32	4.5	11.11	900	150	137.3	14,000	18.8
	300	350.4	402.7															25.7
	450	500.4	552.7															32.2
	600	650.4	702.7															39.9
	750	800.4	852.7															46.3



* Manufacture of dimensions other than those above is also possible.
 * Please inquire at our sales office.

Conveyor Chain with Attached Rollers

● **Order No. Example** With an Attached Top Roller
KTM5100-R / 2LTR 100-link
 Chain No. Attachment Mounting Interval Chain Length



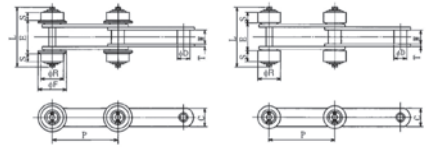
This conveyor chain, based on the standard conveyor roller chain R shape, transports objects using a top roller installed at the top of the intermediate section of the chain pitch. Feel free to ask us about special sizes which are not included in the dimensions as well.

Conveyor Chain with Attached Top Roller Part Dimensions

Chain No.	Pitch P	Roller		Inner Link Inner Width W	Plate		Pin		E	Top Roller		H	Body Approx. Mass (kg/m)	Top Roller for Each Location Added Mass (kg)
		Diameter D	Rail contact width S		C	T	L1	L2		D1	S1			
KTM5100-R/TR	100	40	19	22.2	32	4.5	24	27	30	40	19	70	5.0	0.26
KTM10150-R/TR	150	50	26.5	30	38	6.3	32	36	30	50	26.5	80	7.5	0.56
KTM12200-R/TR	200	65	32	36.5	45	7.9	39.5	46	45	65	32	110	11.6	1.15
KTM12600-R/TR	152.4	57.2	31.5	36.5	45	7.9	39.5	46	37.8	57.2	31.5	95	12.1	0.91

* When you make your order, please specify if the top roller is to be hardened, and also the mounting interval.
 * If even links are designated for the mounting interval, the top roller is mounted to the inside link as standard.

● **Order No. Example**
KTM5100-S / 2L SRF 100-link
 Chain No. Side Roller Type Chain Length
 Attachment Mounting Interval



This chain, based on the standard conveyor roller chain S shape, has side rollers installed in both sides by extension of the pin. Traction for the sprocket to engage with the central S-type roller is performed by the side rollers. Feel free to ask us about special sizes which are not included in the dimensions as well.

Conveyor Chain with Attached Side Roller Part Dimensions

Chain No.	Pitch P	Roller Diameter D	Inner Link Inner Width W	Plate					Side Roller Shape F					Side Roller Shape S L	Rail Gauge Roller Shape F	Body Approx. Mass (kg/m)	Top Roller For Each Location Added Mass (kg)
				C	T	R	F	S	E	R	S	E					
KTMS3075-S/SRF/SRR	75	15.9	16.1	22	3.2	31.8	42	12	38	31.8	15.5	31	74	40	1.8	0.3	
KTMS3100-S/SRF/SRR	100	19.05	18	22	3.2	30	38	12	42.5	30	15.5	34.6	79	44.5	2.0	0.3	
KTM3075-S/SRF/SRR	75	19.05	18	22	3.2	30	38	12	42.5	30	15.5	34.6	79	44.5	2.0	0.3	
KTM3100-S/SRF/SRR	100	22.2	22.2	32	4.5	40	50	14	55	40	19	45	102	57	4.2	0.5	
KTM5075-S/SRF/SRR	75	22.2	22.2	32	4.5	40	50	14	55	40	19	45	102	57	3.8	0.5	
KTM5100-S/SRF/SRR	100	30	30	38	6.3	50	65	20	73	50	26	60	135.6	75	7.0	1.0	
KTM10150-S/SRF/SRR	150	30	30	38	6.3	50	65	20	73	50	26	60	135.6	75	5.9	1.0	
KTM12200-S/SRF/SRR	200	34.93	36.5	45	7.9	65	85	24	92.5	65	32	75.5	165	94.5	8.4	1.8	
KTM12250-S/SRF/SRR	250	34.93	36.5	45	7.9	65	85	24	92.5	65	32	75.5	165	94.5	7.8	1.8	
KTM17200-S/SRF/SRR	200	40.1	50.8	50.8	9.5	65	85	24	111.4	65	32	95.5	186	113.4	12.1	3.8	
KTM17250-S/SRF/SRR	250	40.1	50.8	50.8	9.5	65	85	24	111.4	65	32	95.5	186	113.4	11.1	3.8	
KTM17300-S/SRF/SRR	300	40.1	50.8	50.8	9.5	65	85	24	111.4	65	32	95.5	186	113.4	10.5	3.8	

* When you make your order, please specify if the side roller is to be hardened, and also the mounting interval.

i Guide
 * Manufacture of dimensions other than those above is also possible. * Please inquire at our sales office.

Chain Guide Method

