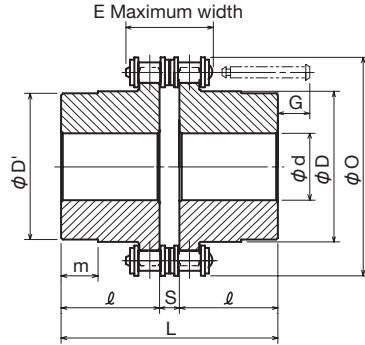
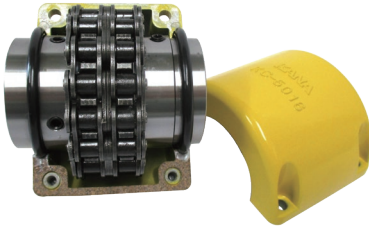


Chain Couplings



The chain coupling consists of a shaft coupling assembled from 2 rows of roller chain and 2 sprockets which engage them. The chain ends can be simply connected or dismantled.

The original KANA structure is such that the case has been split into two perpendicularly to the shaft, and the cases 3012 to 8022 have a V-shaped groove on both sides with an O-ring inserted to prevent oil leaks.

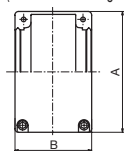
◇ Standard Chain Coupling Body

m Carbon Structural Steel **h** High-frequency Hardened Teeth

Product Code	Chain in Use		Shaft Diameter Range d		Body Dimensions								Approx. Weight kg
	Pitch	E	Minimum (prepared hole H10)	Maximum	O	D	D'	m	L	ℓ	S	G	
3012H	9.525	23.9	14(12)	16	45	26.5	25	5.5	64.8	29.8	4.8	6	0.5
4012H	12.70	32.0	14(12)	22	61	36	33	10	79.4	36	7.4	11	0.8
4014H	12.70	32.0	14(12)	30	69	45	43	9	79.4	36	7.4	11	1.2
4016H			16(14.5)	32	77	51	48	15	87.4	40		7	1.5
5014H	15.875	39.9	16(14)	35	86	56	53	16	99.7	45	9.7	12	2.2
5016H			18(16)	40	96	63	60	16				2.7	
5018H	15.875	39.9	18(16)	45	106	73	70	16	99.7	45	9.7	12	3.8
6018H	19.05	52.5	22(20)	55	128	88	85	18	123.5	56	11.5	19	6.2
6020H	19.05	52.5	22(20)	60	140	102.5	98	16	123.5	56	11.5	19	8.4
6022H			22(20)	70	152	115	110	12					10.5
8018H	25.40	66.2	22(20)	80	170	114.8	110	14.5	141.2	63	15.2	31	12.7
8020H			22(20)	85	186	125	121	11.5	145.2	65		29	16.5
8022H	25.40	66.2	22(20)	100	202	143	140	18.5	157.2	71	15.2	23	20.3
10020H	31.75	79.0	27(25)	110	232	162	160	41	178.8	80	18.8	32	33.0
12018H	38.10	101.2	37(35)	125	255	173	170	56	202.7	90	22.7	53	47.0
12022H			37(35)	140	303	213	210	55	222.7	100		43	72.1

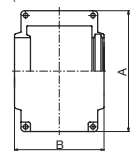
Format 1
3012C to 8022C

(Method with O-ring seals on both sides)



Format 2
10020C to 12022C

(method where one side is fixed and the other is a Z-type oil seal)



3012L

Coupling No.

* You may order just the chain if required.

Order Product Code
3012H Body
(2 MB sprockets + 1 chain)
3012C Case



* Content of the Body

◇ Dedicated Case **m** Aluminum ◇ Dedicated Chain **m** Steel

Product Code	A	B	Weight (kg)
3012C	69	63	0.2
4012C	77	72	0.3
4014C	84	75	0.3
4016C	92	75	0.4
5014C	101	85	0.5
5016C	111	85	0.5
5018C	122	85	0.6
6018C	142	106	0.9
6020C	158	105	1.1
6022C	168	117	1.3
8018C	190	129	2.1
8020C	210	137	2.5
8022C	226	137	2.9
10020C	281	153	4.4
12018C	307	181	5.2
12022C	357	181	7.0

Product Code	Weight (kg)
3012L	0.1
4012L	0.2
4014L	0.2
4016L	0.3
5014L	0.4
5016L	0.5
5018L	0.6
6018L	1.0
6020L	1.2
6022L	1.3
8018L	2.3
8020L	2.5
8022L	2.7
10020L	4.8
12018L	7.6
12022L	9.3

A1 Multi-EP Grease No.2

Order Product Code

MB 4012

Type Model No.

Chain Coupling No.

m Carbon Structural Steel **h** High-frequency Hardened Teeth

Body Dimensions		Chain Coupling No.		Prepared Hole	Shaft Hole Machining Limits		Weight kg	
BL	BD	Type	Product Code		Minimum	Maximum		
29.8	26.5	MB Minimum Bore	MB3012	12	14	16	0.2	
36.0	36.0		MB4012	12	14	22	0.3	
36.0	45.0		MB4014	12	14	30	0.5	
40.0	51.0		MB4016	14.5	16	32	0.6	
45.0	56.0		MB5014	14	16	35	0.9	
45.0	63.0		MB5016	16	18	40	1.1	
45.0	73.0		MB5018	16	18	45	1.6	
56.0	88.0		MB6018	20	22	55	2.6	
56.0	102.5		Non-machined Product	MB6020	20	22	60	3.6
56.0	115.0			MB6022	20	22	70	4.6
63.0	114.8	Body Side	MB8018	20	22	80	5.2	
65.0	125.0		MB8020	20	22	85	7.0	
71.0	143.0		MB8022	20	22	100	8.8	
80.0	162.0		MB10020	25	27	110	14.1	
90.0	173.0		MB12018	35	37	125	19.7	
100.0	213.0		MB12022	35	37	140	31.4	

* An MB sprocket is on one side of the body (only 1 sprocket).

Chain Coupling Guide



Chain Coupling With Attached Case

Q. Which model do I need if I want to order chain couplings with cases?

A. Models differ by shaft hole/key groove machining, NOT MACHINED <--> MACHINED.

<Not Machined> *If you would like Coupling No. 5014

Model	Quantity	5014H (Body)	5014C (Case)
5014H	x 1		
5014C	x 1		



<Inner Diameter Machined>

* Coupling No. 5014 If you would like inner diameter D20 and D30

Model	Quantity
FBN5014D20	x 1
FBN5014D30	x 1
5014C	x 1
5014L	x 1

For the body, 2 x MB sprockets (with no inner diameter machining) and a chain are packed together as a set.

For the <Not Machined> case, you do not need to order chains individually.

Ordering cases is the same as for <Not Machined>.

As chains must be ordered as single items, please take care.

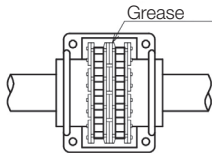


◆ For chain couplings, we recommend that you include a case, and apply grease.

- (1) When using at high rotational speed.
 - (2) When using it in a dusty/dirty environment, for example, or in a humid atmosphere.
 - (3) Scattering of the lubricant agent is prevented and also any intrusion of dust/dirt.
 - (4) The outer appearance looks smart while reducing danger.
- Lubrication significantly lengthens the life of the coupling.

[Cap Bolt Module Size]

Dedicated Case No.	M	Dedicated Case No.	M
3012C	M5	6018C	M 8
4012C	M5	6022C	M 8
4014C	M5	8020C	M 8
4016C	M5	10020C	M 8
5014C	M6	12018C	M10
5016C	M6	12022C	M10
5018C	M6	* Module M	



Chain Coupling No.	Grease Weight kg	O-ring/Z-seal	
		Standards	Model Number
3012	0.05	JIS2401	P25
4012	0.09	JIS2401	P32
4014	0.10	JIS2401	P42
4016	0.12	JIS2401	P48A
5014	0.15	JIS2401	P53
5016	0.18	JIS2401	P60
5018	0.25	JIS2401	P70
6018	0.40	JIS2401	P85
6020	0.50	AN6227	47
6022	0.50	JIS2401	P110
8018	0.80	JIS2401	P110
8020	1.00	JIS2401	P120
8022	1.00	AN6227	60
10020	1.70	-	ZF36
12018	3.30	-	ZF38
12022	4.30	-	ZF46