

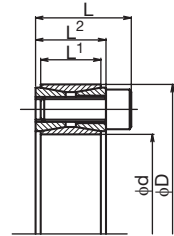
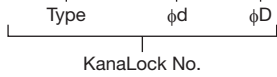
Comeback Products

KanaLocks

KL200-type

● Order No. Example

KL200 75×115



The KL200-type is a KanaLock for a shaft/boss fastening requiring a large transmitted torque. Mounting is easy and other parts are not needed. The adaptable shaft diameters are from 19mm to 200mm, and fitting the boss hole and shaft together is up to H9/h9.

Drawn and polished steel can also be used for the shaft.

 Special Structural Steel

Type	φd	φD	L	L2	L1	Clamp Screw		Loosening Screw da	Maximum Allowable Torque N·m	Bolt Tightening Torque N/m	Weight kg	¥
						No. of Units	Size					
Please refer to the KPL200-type on the previous page for the minor diameter dimension.												
KL 200	75	115				14	M10x25	M12	66	115	1.35	
	80	120				16						
	85	125	38	28	24	18						
	90	130										
	95	135										
	100	145				14	M12x30	M14	115	115	2.23	
	110	155	45	33	26	16						
	120	165										
	130	180				20	M12x35	M14	115	115	3.6	
	140	190				22						
	150	200	50	38	34	24						
	160	210				26						
	170	225				22	M14x40	M16	180	180	5.7	
	180	235	58	44	38	24						
	190	250				28	M14x45				8.2	
	200	260	66	52	46	30						



KanaLock No. and quantity



3-day shipping

* Single order system available



* Please contact our sales office about the selection.

* We offer cost-performance products for dimensions which are not listed. See P330.