

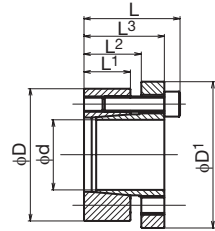
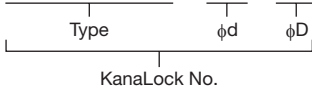
Comeback Products

KanaLocks

KL201FH-type (Flange, Standard Torque Type)

● Order No. Example

KL201FH 19×47



The KL201FH-type, in addition to the advantages of the KL200-type, is a KanaLock with an increased shaft and boss "centering effect". Boss hole and shaft fit is up to H8/h8.

 Special Structural Steel

Type	φd	φD	L	L3	L2	L1	D1	Clamp Screw		Maximum Allowable Torque N·m	Bolt Tightening Torque N/m	Weight g	¥
								No. of Units	Size				
KL 201 FH	19	47	38	32	24	20	53	6	M 6×25	290	16	355	
	20									300		350	
	22						330	335					
	24						420	380					
	25	50					56	7		440		370	
	28									480		440	
	30	60	38	32	24	20	62	7	M 6×25	520	16	425	
	32									710		510	
	35						780	475					
	38						850	550					
	38	65					73	9		900		520	
	42									1,730		955	
	45	80	48	40	29	24	83	9	M 8×30	1,850	39	900	
	48									1,980		1,010	
	50						2,060	950					
	55						2,520	1,060					
	60	90	48	40	29	24	99	10	M 8×30	2,750	39	1,130	
	65						104			1,220			
	70	110	62	52	37	30	119	10	M10×40	5,040	75	2,280	
	75									124		2,400	
80	129						2,520						
80	129						2,520						
85	125	62	52	37	30	134	12	M10×40	7,340	75	2,660		
90									139		2,780		
95						144	2,980						
95						144	2,980						
100	145	74	64	46	39	154	15		10,800		4,300		
100						154			4,300				



KanaLock No. and quantity



3-day shipping

* Single order system available



* Concerning the measurements and options not listed here, please contact our sales office.