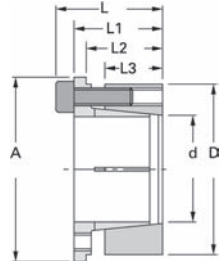
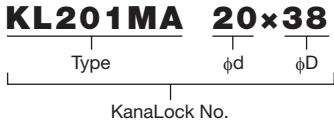


KanaLocks

KL201MA-type Standard Type

● Order No. Example



The KL201MA-type keeps down the hub end face and outer circumference runout due to assembly, controls the backlash between the gears, and reduces the belt noise due to timing pulley runout. φ5 to φ85 are adaptable shaft diameters, and the applicable shaft tolerances are g5, g6, h5, h6, h7, h8

Special Structural Steel

Type	φd	φD	A	L	L1	L2	L3	Maximum Allowable Torque N·m	Bolt Tightening Torque N·m	¥
KL 201 MA	5	16	18.5	16.0	13.0	11.2	8.0	6.8	1.9	
	6	19	21.5	18.3	14.3	12.3	9.0	12.7	3.9	
	6.35	20	22.5	18.3	14.3	12.3	9.0	12.7	3.9	
	8	21	23.5	18.6	14.6	12.6	9.3	19.6	3.9	
	10	23	25.5	18.8	14.8	12.8	9.5	27.5	3.9	
	11	24	26.5	19.8	15.8	13.8	9.5	29.4	3.9	
	12	26	28.5	22.0	18.0	15.5	10.5	44.1	3.9	
	14	28	30.5	22.0	18.0	15.5	10.5	63.7	3.9	
	15	29	31.5	23.0	19.0	16.5	11.5	80.4	3.9	
	16	30	33.0	23.6	19.6	17.1	12.0	83.3	3.9	
	17	31	33.5	24.1	20.1	17.6	12.5	92.2	3.9	
	18	32	34.5	24.1	20.1	17.6	12.5	95.1	3.9	
	19	33	35.5	24.1	20.1	17.6	12.5	98.1	3.9	
	20	38	42.0	29.1	24.1	21.1	15.3	216	8.8	
	22	40	44.0	29.1	24.1	21.1	15.3	255	8.8	
	24	42	46.0	30.1	25.1	22.1	16.3	363	8.8	
	25	43	47.0	31.1	26.1	23.1	17.3	392	8.8	
	28	46	50.0	31.6	26.6	23.1	17.3	441	8.8	
	30	48	52.0	31.6	26.6	23.1	17.3	500	8.8	
	32	50	54.0	32.6	27.6	24.1	18.3	530	8.8	
	35	57	62.0	36.0	30.0	26.0	19.5	883	15.7	
	38	60	65.0	36.5	30.5	26.5	20.0	1020	15.7	
	40	62	67.0	37.0	31.0	27.0	20.5	1079	15.7	
	42	64	69.0	37.0	31.0	27.0	20.5	1157	15.7	
	45	67	72.0	37.5	31.5	27.5	21.0	1285	15.7	
	48	70	75.0	38.0	32.0	27.5	21.0	1402	15.7	
	50	72	77.0	38.5	32.5	28.0	21.5	1706	15.7	
	55	77	83.0	38.5	32.5	28.0	21.5	1883	15.7	
60	82	87.0	39.5	33.5	28.5	22.0	2108	15.7		
65	87	92.0	39.5	33.5	28.5	22.0	2236	15.7		
70	97	103.0	44.1	36.1	31.1	24.0	3285	37.3		
75	102	108.0	44.1	36.1	31.1	24.0	3746	37.3		



KanaLock No. and quantity



3-day shipping

* Single order system available



* Concerning the measurements and options not listed here, please contact our sales office.