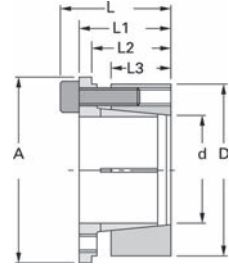
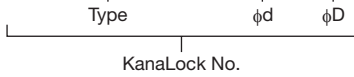


### ● Order No. Example

**KL201MKA 20×38**



With the KL201MKA-type, the body has a simple rust-proofing treatment (electroless nickel plating/chromium-free) and the bolts are painted with a low-friction stabilizer coating with an anti-rust effect, making it ideal for applications in which rusting cannot be tolerated.  $\phi 8$  to  $\phi 50$  are adaptable shaft diameters, and the applicable shaft tolerances are g5, g6, h5, h6, h7, h8

 Special Structural Steel

Type	$\phi d$	$\phi D$	A	L	L1	L2	L3	Maximum Allowable Torque N·m	Bolt Tightening Torque N·m	¥
KL 201 MKA	8	21	23.5	18.6	14.6	12.6	9.3	16.6	3.9	
	10	23	25.5	18.8	14.8	12.8	9.5	19.6	3.9	
	11	24	26.5	19.8	15.8	13.8	9.5	22.5	3.9	
	12	26	28.5	22.0	18.0	15.5	10.5	36.2	3.9	
	14	28	30.5	22.0	18.0	15.5	10.5	50.9	3.9	
	15	29	31.5	23.0	19.0	16.5	11.5	54.8	3.9	
	16	30	33.0	23.6	19.6	17.1	12.0	58.8	3.9	
	17	31	33.5	24.1	20.1	17.6	12.5	76.4	3.9	
	18	32	34.5	24.1	20.1	17.6	12.5	80.3	3.9	
	19	33	35.5	24.1	20.1	17.6	12.5	85.2	3.9	
	20	38	42.0	29.1	24.1	21.1	15.3	183	8.8	
	22	40	44.0	29.1	24.1	21.1	15.3	201	8.8	
	24	42	46.0	30.1	25.1	22.1	16.3	252	8.8	
	25	43	47.0	31.1	26.1	23.1	17.3	264	8.8	
	28	46	50.0	31.6	26.6	23.1	17.3	295	8.8	
	30	48	52.0	31.6	26.6	23.1	17.3	396	8.8	
	32	50	54.0	32.6	27.6	24.1	18.3	423	8.8	
	35	57	62.0	36.0	30.0	26.0	19.5	548	15.7	
	38	60	65.0	36.5	30.5	26.5	20.0	741	15.7	
	40	62	67.0	37.0	31.0	27.0	20.5	779	15.7	
42	64	69.0	37.0	31.0	27.0	20.5	823	15.7		
45	67	72.0	37.5	31.5	27.5	21.0	882	15.7		
48	70	75.0	38.0	32.0	27.5	21.0	1117	15.7		
50	72	77.0	38.5	32.5	28.0	21.5	1362	15.7		



KanaLock No. and quantity



3-day shipping

\* Single order system available



\* Concerning the measurements and options not listed here, please contact our sales office.