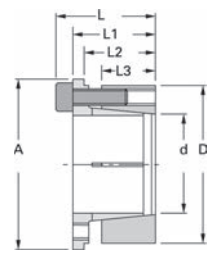


KanaLocks KL201MSA-type (stainless steel specification)

● Order No. Example
KL201MSA 20×38
 Type φd φD
 KanaLock No.



The KL201MSA-type uses stainless steel (SUS304) for the body, making it ideal for use inside clean-rooms for semiconductors, LCD devices, etc., where rusting cannot be tolerated. φ8 to φ50 are adaptable shaft diameters, and the applicable shaft tolerances are g5, g6, h5, h6, h7, h8

 SUS304

Type	φd	φD	A	L	L1	L2	L3	Maximum Allowable Torque N·m	Bolt Tightening Torque N·m	¥
KL 201 MSA	8	21	23.5	18.6	14.6	12.6	9.3	10.7	2.7	
	10	23	25.5	18.8	14.8	12.8	9.5	12.7	2.7	
	11	24	26.5	19.8	15.8	13.8	9.5	14.7	2.7	
	12	26	28.5	22.0	18.0	15.5	10.5	24.5	2.7	
	14	28	30.5	22.0	18.0	15.5	10.5	28.4	2.7	
	15	29	31.5	23.0	19.0	16.5	11.5	30.4	2.7	
	16	30	33.0	23.6	19.6	17.1	12.0	32.3	2.7	
	17	31	33.5	24.1	20.1	17.6	12.5	46.1	2.7	
	18	32	34.5	24.1	20.1	17.6	12.5	49.0	2.7	
	19	33	35.5	24.1	20.1	17.6	12.5	51.9	2.7	
	20	38	42.0	29.1	24.1	21.1	15.3	121.6	5.6	
	22	40	44.0	29.1	24.1	21.1	15.3	133.4	5.6	
	24	42	46.0	30.1	25.1	22.1	16.3	146.1	5.6	
	25	43	47.0	31.1	26.1	23.1	17.3	153.0	5.6	
	28	46	50.0	31.6	26.6	23.1	17.3	213.8	5.6	
	30	48	52.0	31.6	26.6	23.1	17.3	229.5	5.6	
	32	50	54.0	32.6	27.6	24.1	18.3	244.2	5.6	
	35	57	62.0	36.0	30.0	26.0	19.5	301.1	9.6	
	38	60	65.0	36.5	30.5	26.5	20.0	409.0	9.6	
	40	62	67.0	37.0	31.0	27.0	20.5	430.6	9.6	
45	67	72.0	37.5	31.5	27.5	21.0	484.6	9.6		
48	70	75.0	38.0	32.0	27.5	21.0	620.9	9.6		
50	72	77.0	38.5	32.5	28.0	21.5	754.3	9.6		



KanaLock No. and quantity



3-day shipping

* Single order system available



* Concerning the measurements and options not listed here, please contact our sales office.