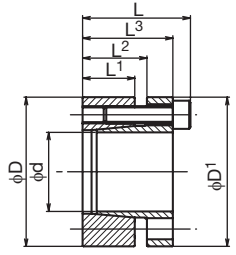
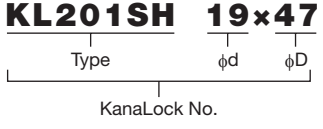


# Comeback Products

## KanaLocks

### KL201SH-type (Straight, Standard Torque Type)

● Order No. Example



The KL201SH-type, in addition to the advantages of the KL200-type, is a KanaLock with an increased shaft and boss "centering effect". Boss hole and shaft fit is up to H8/h8.

 Special Structural Steel

Type	φd	φD	L	L3	L2	L1	φD1	Clamp Screw		Maximum Allowable Torque N·m	Bolt Tightening Torque N/m	Weight g	¥			
								No. of Units	Size							
KL 201 SH	19	47	38	32	24	20	46	4	M 6×25	300	16	325				
	20									310		305				
	22									340		345				
	24									470		335				
	25						50					49		5	490	395
	28														550	375
	30	60	38	32	24	20	59	6	M 6×25	590	16	455				
	32									820		420				
	35									890		490				
	38									930		465				
	40	75					74	6	M 8×30	1,810	39	855				
	42									1,940		795				
	45									2,070		905				
	48									2,160		860				
	50	80	48	40	29	24	79	7	M 8×30	2,770	39	935				
	55									3,020		1,000				
	55									3,740		1,070				
	60									90		48		40	29	24
	65	5,940	2,170													
	65	6,330	2,280													
70	110	62	52	37	30	109	7	M10×40	7,690		75		2,400			
75									8,140	2,510						
80									10,740	2,650						
80									11,300	3,950						
85	125	62	52	37	30	124	8	M10×40	124	75	2,400					
90									129		2,510					
95									134		2,650					
95									144		3,950					
100	145	74	64	46	39	144	10	M10×40	11,300	75	3,950					



KanaLock No. and quantity



3-day shipping

\* Single order system available



\* Concerning the measurements and options not listed here, please contact our sales office.