

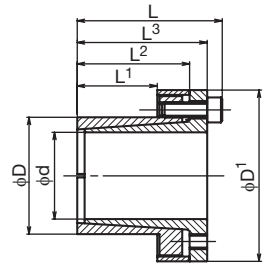
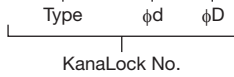
# Comeback Products

## KanaLocks

### KL210-type

#### ● Order No. Example

### KL210 6x14



With the small ratio of inner/outer diameter for the KL210-type, fastening is possible for a boss of small diameter. Additionally, because of the superior "centering effect", it can be used without a guide part for alignment. There is no movement in the axial direction of the boss. Boss hole and shaft fit is up to H8/h8.

 Special Structural Steel

Type	φd	φD	L	L3	L2	L1	D1	Clamp Screw		Maximum Allowable Torque N·m	Bolt Tightening Torque N·m	Weight g	¥
								No. of Units	Size				
KL 210	6	14	24	21	18.5	10	25	3	M3×10	12	2.0	46	
	7	15	29	25	22	12	27		M4×10	24		67	
	8	16	30	26	23	14	28	4	M4×10	27	4.7	65	
	9									41		67	
	10	10	45	64									
	11	18	30	26	23	14	32	4	M4×10	50	4.7	85	
	12									55		80	
	13	23	30	26			38			59	16	125	
	14									64		120	
	15	24	42	36	29	16	45	3	M6×18	117	16	257	
	16									125		250	
	17	26	44	38	31	18	47	4	M6×18	177	16	280	
	18									180		270	
	19	27	44	38	31	18	49			190	16	290	
	20									200		300	
	21	32					54	4		220	16	385	
	22									250		405	
	23	34	51	45	38	25	56	4	M6×18	260	16	390	
	24									430		475	
	25	39					61	6		460	16	480	
26	500									520			
27	43					65			720	16	630		
28									790		670		
29	47	58	52	45	32	72	8	M6×18	790	16	735		
30									830		780		
31	50	58	52	45	32	75			870	39	1,230		
32									870		1,240		
33	55	78	70	62	45	86	8	M8×22	1,680	39	1,400		
34									1,800		1,400		
35	59	78	70	62	45	87	8	M8×22	1,870	39	1,400		
36	62	78	70	62	45	87	8	M8×22	1,870	39	1,400		
37	65	78	70	62	45	92	8	M8×22	1,870	39	1,400		



KanaLock No. and quantity



3-day shipping

\* Single order system available



\* Concerning the measurements and options not listed here, please contact our sales office.