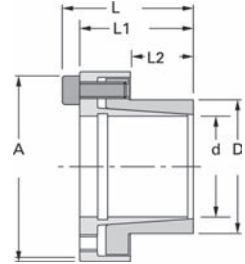
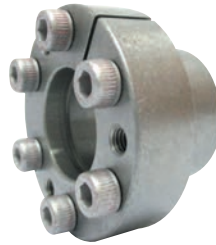
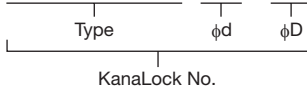


● Order No. Example
KL210MR 20x28



The KL210MR-type has a compact outline which makes it ideal in applications where there is no space for a large outer diameter. $\phi 6$ to $\phi 50$ are adaptable shaft diameters, and the applicable shaft tolerances are g5, g6, h5, h6, h7, h8

 Special Structural Steel

Type	ϕd	ϕD	A	L	L1	L2	Maximum Allowable Torque	Bolt Tightening Torque	¥
							N·m	N·m	
KL 210 MR	6	12	23.0	22.0	19.0	10	11	1.7	
	8	15	28.0	27.0	23.0	12	25	4.0	
	10	18	31.5	27.0	23.0	12	44	4.0	
	11	18	31.5	27.0	23.0	12	48	4.0	
	12	20	33.5	27.0	23.0	12	53	4.0	
	14	22	35.5	27.0	23.0	12	61	4.0	
	15	23	38.5	32.0	27.0	14	115	8.0	
	16	24	39.5	32.0	27.0	14	123	8.0	
	17	25	40.5	32.0	27.0	14	131	8.0	
	18	26	46.0	36.0	30.0	14	210	14.0	
	19	27	47.0	36.0	30.0	14	221	14.0	
	20	28	48.0	36.0	30.0	14	233	14.0	
	22	32	52.0	38.0	32.0	16	256	14.0	
	24	34	54.0	38.0	32.0	16	279	14.0	
	25	34	54.0	38.0	32.0	16	291	14.0	
	28	39	59.0	42.0	36.0	20	488	14.0	
	30	41	61.0	42.0	36.0	20	523	14.0	
	32	43	63.0	42.0	36.0	20	558	14.0	
	35	47	67.0	44.0	38.0	22	813	14.0	
	38	50	70.0	44.0	38.0	22	883	14.0	
40	53	73.0	44.0	38.0	22	929	14.0		
42	55	75.0	44.0	38.0	22	976	14.0		
45	59	84.0	58.5	50.5	30	1910	34.0		
48	62	87.0	58.5	50.5	30	2040	34.0		
50	65	90.0	58.5	50.5	30	2120	34.0		



KanaLock No. and quantity



3-day shipping

* Single order system available



* Concerning the measurements and options not listed here, please contact our sales office.