

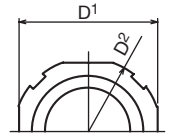
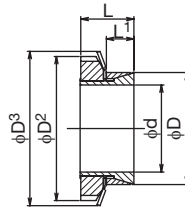
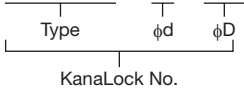
Comeback Products

KanaLocks

KL250-type

● Order No. Example

KL250 6 × 13



Since the KL250-type is completely set up using the minimum of mounting space, it can be mounted using just a single fastening nut. Additionally, with no required parts, it is not necessary to provide space for a C-type spanner in the axial direction either. Boss hole and shaft fit is up to H8/h8.

Special Structural Steel

Type	φd	φD	L	L1	D1	D2	D3	Nut Size	Maximum Allowable Torque N·m	Tightening Torque (Application example 1) N·m	Tightening Torque (Application example 2) N·m	Weight g	¥
KL 250	6	13	12.5	7.2	16	18	21	AN00	3	8	6.5	15	
	7	13			19	22	25	AN01	4	12	9.5	19	
	8	15	15.5	9.2	22	25	28	AN02	5	13	10	17	
	9	15							8	26	21	36	
	10	15							10	29	23	33	
	11	19	16.5	9.2	27	32	36	AN04	13	32	25	30	
	12	16							15	45	35	60	
	14	16							21	53	40	55	
	15	16							25	56	44	50	
	16	25	18	9.5	32	38	42	AN05	28	60	47	48	
	17	17							31	80	63	82	
	18	17							35	85	67	80	
	19	17							39	90	70	78	
	20	17							43	95	75	75	
	22	35	19.5	10	46	52	57	AN07	52	123	97	90	
	24	24							62	135	106	88	
	25	24							67	140	110	85	
	28	40	21.5	11	50	58	62	AN08	95	205	160	148	
	30	30							100	202	160	135	
	32	45	24.5	13	55	65	69	AN09	125	276	216	180	
	35	35							150	294	230	165	
	36	35							160	300	238	160	
	38	38							230	465	365	260	
	40	38							255	490	380	240	
42	38	280							580	460	340		
45	57	25.5	65	70	74	AN10	325	600	470	300			
48	48						370	720	560	355			
50	62	27.5	75	80	86	AN12	365	680	530	315			
55	55						400	740	570	380			
60	60						475	860	680	430			
65	79	30.5	85	92	98	AN14	650	1,100	860	500			
70	70						760	1,270	990	650			
75	91	38.5	20	95	105	112	AN16	850	1,500	1,150	780		



Order Method

KanaLock No. and quantity



Postage

3-day shipping

* Single order system available



Guide

* Concerning the measurements and options not listed here, please contact our sales office.



Precautions

Please take care not to confuse the tightening torques in the Application Examples 1 and 2 in the above table.