

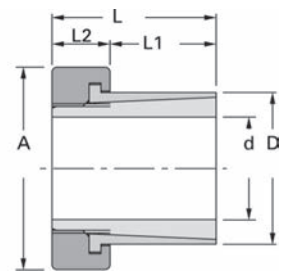
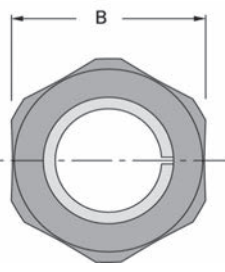
KanaLocks

KL250MN-type Nut Fastening Type

● Order No. Example
KL250MN 20×29

 Type φd φD

 KanaLock No.



With the KL250MN-type, the shaft and hub can be fastened together using just nut fastening which contributes greatly to reduced assembly time. φ8 to φ35 are adaptable shaft diameters, and the applicable shaft tolerances are g5, g6, h5, h6, h7, h8

 Special Structural Steel

Type	φd	φD	A	B	L	L1	L2	Maximum Allowable Torque N·m	Nut Tightening Torque N·m	¥
KL 250 MN	8	14	23.5	22	19	11	8	29.4	24.5	
	10	17	26.0	24	21	12	9	34.3	29.4	
	11	18	26.0	24	22	12	10	39.2	34.3	
	12	20	26.0	24	23	13	10	49.0	44.1	
	14	23	32.5	30	26	15	11	88.3	58.8	
	15	24	32.5	30	27	16	11	108.0	68.6	
	17	26	32.5	30	31	19	12	186.0	98.1	
	20	29	39.0	36	33	20	13	245.0	137	
	22	32	39.0	36	35	22	13	275.0	147	
	24	34	44.0	41	37	24	13	314.0	167	
25	35	44.0	41	38	25	13	353.0	186		
28	40	54.0	50	43	28	15	378.0	226		
30	42	60.0	55	46	30	16	392.0	255		
35	48	66.0	60	52	35	17	461.0	294		



KanaLock No. and quantity



3-day shipping

* Single order system available



* Concerning the measurements and options not listed here, please contact our sales office.