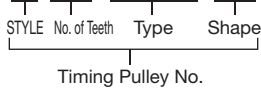




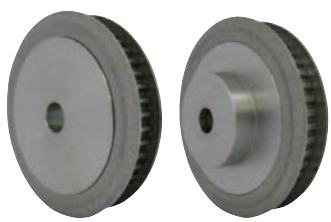
H150-type

K-Timing Pulley <Prepared Hole Product>

● Order No. Example

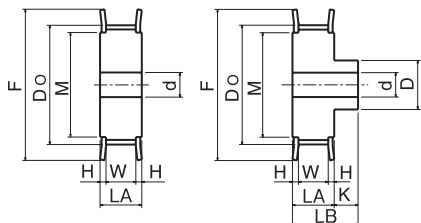
K 20 H150 BF

(Type)

H150**W: 40****H: 2.5**

AF

BF



AF Type

BF Type

The KANA Timing Pulley achieves clean transmission thanks to its low noise that comes by way of its excellent timing transmission performance.

Type	No. of Teeth	Shape	Dp	Do	LA	LB	K	D	d		F	M	Compatible Flanges	Pulley Approx. Weight kg	
									min	max				AF	BF
H 150	14	AF, BF	56.60	55.22	45	60	15	38	14	26	61	41	KTF-166141	0.70	0.81
	15	AF, BF	60.64	59.27	45	60	15	46	16	30	65	50	KTF-166550	0.80	0.97
	16	AF, BF	64.68	63.31	45	60	15	46	16	30	69	50	KTF-166950	0.93	1.10
	18	AF, BF	72.77	71.39	45	60	15	54	16	36	78	58	KTF-167858	1.22	1.46
	19	AF, BF	76.81	75.44	45	60	15	55	16	36	83	63	KTF-168363	1.28	1.63
	20	AF, BF	80.85	79.48	45	60	15	56	16	38	86	66	KTF-168666	1.54	1.81
	21	AF, BF	84.89	83.52	45	60	15	58	16	38	90	73	KTF-169073	1.72	2.00
	22	AF, BF	88.94	87.56	45	60	15	58	16	38	93	75	KTF-169375	1.90	2.19
	24	AF, BF	97.02	95.65	45	60	15	62	20	38	105	84	KTF-1610584	2.26	2.57
	25	AF, BF	101.06	99.69	45	60	15	66	20	40	108	84	KTF-1610884	2.47	2.83
	26	AF, BF	105.11	103.73	45	60	15	70	20	40	112	90	KTF-1611290	2.69	3.10
	28	AF, BF	113.19	111.82	45	60	15	74	20	42	118	90	KTF-1611890	3.15	3.62
	30	AF, BF	121.28	119.90	45	60	15	74	20	42	126	100	KTF-16126100	3.66	4.12
	32	AF, BF	129.36	127.99	45	65	20	78	20	45	136	118	KTF-16136118	4.20	4.89
	34	AF, BF	137.45	136.07	45	65	20	82	20	45	146	128	KTF-16146128	4.77	5.55
	36	AF, BF	145.53	144.16	45	65	20	82	20	48	152	134	KTF-16152134	5.38	6.16
	38	AF, BF	153.62	152.24	45	65	20	88	20	52	159	141	KTF-16159141	6.13	7.04
	40	AF, BF	161.70	160.33	45	65	20	88	20	52	168	150	KTF-16168150	6.71	7.61



Timing Pulley No. and Quantity



Guide

* Since we also manufacture sizes other than those in the catalog, and machine shaft holes/keys/taps, etc., depending on your request, please contact our company's sales office for details.



Same-day shipping



Precautions

* The prepared hole diameter is finished at the minimum diameter H7. Comes with a flange.

K-Timing Pulley <Prepared Hole Product>

H150-type



Use Examples

* Please use with timing belt. ▶▶ P.440 -

* While flanges are included, for additional flanges, consult here. ▶▶ P.434 -



Product Name	Material
Pulley	Carbon Steel
Flange	Common Steel

* H150 (for 38.1mm)

Type	No. of Teeth	AF		BF	
		¥	Semi-F ¥	¥	Semi-F ¥
H 150	14				
	15				
	16				
	18				
	19				
	20				
	21				
	22				
	24				
	25				
	26				
	28				
	30				
	32				
34					
36					
38					
40					

* Please refer to P24 to P33 for the Semi-F Series <Complete Product> order method.