

K-Timing Pulley Flange

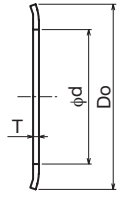
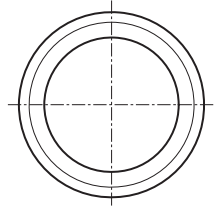


Flange for MXL/XL/L/S2M/S3M/S5M/T5/T10 (Aluminum/Thickness 1.0-type)

Order No. Example **KTA103826**



Flange No.



m: Aluminum

Flange No.	Outer Diameter Do	φd	T	Pulley No. and No. of Teeth							¥			
				MXL	XL	L	S2M	S3M	S5M	T5		T10		
KTA-101306	13	6	1.0				14,15							
KTA-101508	15	8					16,18							
KTA-101610	16	10					20	14						
KTA-101811	18	11		20,21,22				22	15					
KTA-102012	20	12		23,24				24	16					
KTA-102312	23	12		25,26				26	18			11,12		
KTA-102313	23	13		27,28,29,30		10		28,30	20					
KTA-102513	25	13				11								
KTA-102514	25	14		31		12,13		32	22			13		
KTA-102616	26	16		32,33,34,35				34,36	24	14		14		
KTA-102818	28	18		36,37,38,39		14,15			26	15		15,16		
KTA-103120	31	20		40,41,42		16		40	28	16		17,18		
KTA-103322	33	22		43,44,45,46		17,18		44	30	18		19		
KTA-103522	35	22		47,48,49,50		19	10	48,50	32	20		20	10	
KTA-103826	38	26		51,52,53,54		20,21	11		34	21		21	11	
KTA-104028	40	28		55,56,57,58					36	22		22,23		
KTA-104328	43	28				22,23	12					24,25	12	
KTA-104432	44	32		59,60,61,62,63		24,25	13	60	40	24			13	
KTA-104734	47	34		64,65,66,67		26	14		44	26		26,27	14	
KTA-104836	48	36		68,69,70		27,28			48	28		28		
KTA-105136	51	36	71,72,73,74,75		29			50			29,30			
KTA-105441	54	41	76,77,78,79								31,32			
KTA-105539	55	39			30									
KTA-105741	57	41	80,81,82,83		31,32,33						33			
KTA-106141	61	41	84,85,86,87,88,89,90		34,35,36			60			34,35,36			
KTA-106550	65	50	91,92,93,94,95		37,38						37,38			
KTA-106950	69	50	96,97,98,99,100,101,102		39,40						39,40,41			
KTA-107453	74	53	103,104,105,106,107,108,109,110		41,42,43						42,43,44			
KTA-107858	78	58	111,112,113,114,115		44,45						45,46,47			
KTA-108363	83	63												
KTA-108666	86	66												



Flange No. and Quantity



Same-day shipping



Precautions

* For the Timing Belt transmission, the belt is offset in one direction or the other during rotation. A Pulley Flange installation is recommended during the design phase.
* 2 per set

K-Timing Pulley Flange Flange for MXL/XL/L/H/S5M/T5/T10 (Aluminum/Thickness 1.6-type)

m: Aluminum

Flange No.	Outer Diameter Do	φd	T	Pulley No. and No. of Teeth							¥
				MXL	XL	L	H	S5M	T5	T10	
KTA-165136	51	36	1.6			15		30		15	
KTA-165441	54	41				16		32			
KTA-165539	55	39				17				16	
KTA-165741	57	41				18	14	34,36		17,18	
KTA-166141	61	41									
KTA-166550	65	50				19,20	15			19	
KTA-166950	69	50				21	16	40		20	
KTA-167453	74	53				22,23	17	44		21,22	
KTA-167858	78	58				24	18			23	
KTA-168363	83	63			116,117,118	46,47	25	19	48	48,49,50	24
KTA-168666	86	66			119,120	48,49,50	26,27	20	50	51,52	25,26
KTA-169073	90	73				51,52	21	21		53,54	27
KTA-169375	93	75				53,54,55	28,29	22		55,56	28
KTA-169978	99	78				56,57,58,59	30,31	23	60	57,58,59,60	29,30
KTA-1610584	105	84				60,61,62,63	32	24		61,62,63	31,32
KTA-1610884	108	84					33	25		64,65	
KTA-1611290	112	90				64,65	34,35	26		66,67	33,34
KTA-1611590	115	90				66,67,68	36	27		68,69,70	35
KTA-1611890	118	90				69,70,71	37	28		71,72	36
KTA-16126100	126	100				72,73,74,75	38,39,40	29,30		73,74,75,76,77	37,38
KTA-16131101	131	101			76,77,78,79	41,42	31		78,79,80	39,40	
KTA-16136118	136	118			80	43	32		81,82,83	41	
KTA-16138125	138	125			81,82,83	44	33		84,85	42	
KTA-16146128	146	128			84,85,86,87	45,46	34,35		86,87,88,89	43,44	
KTA-16152134	152	134			88,89,90,91	47,48	36		90,91,92	45,46	
KTA-16168150	168	150					40				