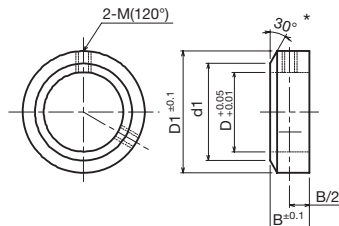


Shaft Collar <KSC>

● Order No. Example KSC0506

Shaft Collar No.



* Most suitable for positioning the idler sprocket and fixing the bearing housing to the shaft.

◇ List of Shaft Collar Sizes

Shaft Collar No.	Shaft Hole Diameter ΦD ^{+0.05} / _{-0.01}	Total Width B±0.1	Outer Diameter D1	d1	Hole for Set Screws M	Set Screws M x Length	Mass (g)	¥
KSC 0305	3	5	7	—	☆ M3	M3×3	2	
KSC 0306	3	6	7	—	☆ M3	M3×3	2	
KSC 0308	3	8	7	—	☆ M3	M3×3	2	
KSC 0405	4	5	8	—	☆ M3	M4×4	2	
KSC 0406	4	6	12	—	☆ M4	M4×4	5	
KSC 0408	4	8	12	—	☆ M4	M4×4	7	
KSC 0505	5	5	11	—	☆ M3	M3×3	3	
KSC 0506	5	6	14	—	☆ M4	M4×4	7	
KSC 0508	5	8	14	—	☆ M4	M4×4	9	
KSC 0510	5	10	14	—	☆ M4	M4×4	11	
KSC 0605	6	5	12	—	M3	M3×3	4	
KSC 0606	6	6	15	—	☆ M4	M4×4	7	
KSC 0608	6	8	15	—	☆ M4	M4×4	10	
KSC 0610	6	10	16	—	☆ M4	M4×4	14	
KSC 0805	8	5	14	—	M3	M3×3	5	
KSC 0806	8	6	16	13	M4	M4×4	8	
KSC 0808	8	8	16	13	M4	M4×4	10	
KSC 0810	8	10	18	13	M4	M4×4	17	
KSC 1005	10	5	16	—	M3	M3×3	5	
KSC 1006	10	6	18	16	M4	M4×4	9	
KSC 1008	10	8	18	16	M4	M4×4	12	
KSC 1010	10	10	20	16	M4	M4×4	19	
KSC 1206	12	6	20	—	M4	M4×4	10	
KSC 1208	12	8	22	20	M4	M4×4	17	
KSC 1210	12	10	26	20	M5	M5×6	33	
KSC 1212	12	12	26	20	M6	M6×6	40	
KSC 1306	13	6	20	—	M4	M4×4	9	
KSC 1308	13	8	22	20	M4	M4×4	16	
KSC 1310	13	10	26	20	M5	M5×6	32	
KSC 1412	14	12	26	20	M5	M5×6	36	
KSC 1506	15	6	24	—	M4	M4×4	13	
KSC 1508	15	8	25	24	M5	M5×6	20	
KSC 1510	15	10	25	24	M5	M5×6	25	
KSC 1512	15	12	28	24	M5	M5×6	42	
KSC 1606	16	6	24	—	M4	M4×4	12	
KSC 1608	16	8	28	24	M5	M5×6	27	
KSC 1610	16	10	28	24	M5	M5×6	33	
KSC 1612	16	12	28	24	M5	M5×6	40	
KSC 1710	17	10	30	26	M6	M6×6	38	
KSC 1712	17	12	32	26	M6	M6×6	55	
KSC 1815	18	15	32	29	M6	M6×6	65	

The ☆ indicates 1 screw

* Exterior may differ slightly from drawings according to d1 dimensions.

KSC Standard Type

- m** Carbon Structural Steel
- s** Black Oxide Finish
- i** Comes with two set screws

Shaft Collar No.	Shaft Hole Diameter ϕD <small>+0.05 -0.01</small>	Total Width B ± 0.1	Outer Diameter D1	d1	Hole for Set Screws M	Set Screws M x Length	Mass (g)	¥
KSC 2007	20	7	30	—	M5	M5×6	22	
KSC 2010	20	10	32	29	M6	M6×6	39	
KSC 2012	20	12	32	29	M6	M6×6	47	
KSC 2015	20	15	32	29	M6	M6×6	58	
KSC 2218	22	18	38	34	M8	M8×8	107	
KSC 2512	25	12	38	37	M6	M6×6	61	
KSC 2515	25	15	38	37	M6	M8×8	76	
KSC 2518	25	18	42	38	M8	M8×8	127	
KSC 2818	28	18	45	40	M8	M8×8	138	
KSC 3014	30	14	45	42	M8	M8×8	98	
KSC 3016	30	16	45	42	M8	M8×8	111	
KSC 3018	30	18	49	42	M8	M8×8	167	
KSC 3020	30	20	49	42	M8	M8×8	185	
KSC 3220	32	20	53	44	M8	M8×8	220	
KSC 3515	35	15	50	47	M8	M8×8	118	
KSC 3518	35	18	55	47	M8	M8×8	311	
KSC 3520	35	20	59	47	M8	M8×8	279	
KSC 3822	38	22	64	50	M10	M10×12	360	
KSC 4018	40	18	60	55	M10	M10×8	222	
KSC 4020	40	20	72	—	M10	M10×12	442	
KSC 4022	40	22	72	55	M10	M10×12	486	
KSC 4522	45	22	75	60	M10	M10×12	489	
KSC 5020	50	20	70	65	M10	M10×8	296	
KSC 5025	50	25	79	65	M10	M10×12	577	
KSC 5528	55	28	81	70	M12	M12×12	611	
KSC 6028	60	28	88	75	M12	M12×12	716	
KSC 6528	65	28	94	85	M12	M12×12	796	
KSC 7032	70	32	113	90	M16	M16×16	1552	
KSC 7532	75	32	119	95	M16	M16×16	1684	
KSC 8032	80	32	126	105	M16	M16×16	1869	



Order Method

Shaft Collar No. and Quantity



Use Examples



Postage

Same-day shipping



Precautions

* Since we also manufacture sizes other than those in the catalog upon request, please contact our company's sales office for details.

