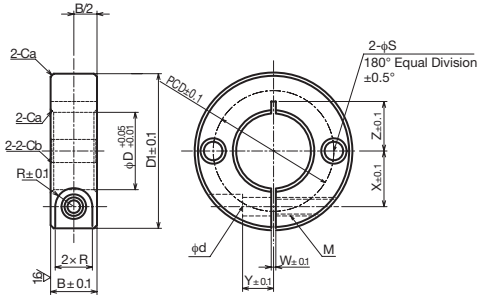


Shaft Collar <KSC-SL2>

Order No. Example KSC1215SL2

Shaft Collar No.



◇ List of Shaft Collar Sizes

Shaft Collar No.	Inner Diameter φD	Total Width B±0.1	Outer Diameter D1	Bolt Hole M	Bolt M x Length	φd	R	W	X
KSC 0608SL2	6	8	20	M 3	M 3x10	3.4	3	1	6
KSC 0610SL2	6	10	20	M 4	M 4x10	4.5	3.75	1	6
KSC 0808SL2	8	8	25	M 3	M 3x10	3.4	3	1.5	8
KSC 0810SL2	8	10	25	M 4	M 4x12	4.5	3.75	1.5	8
KSC 0812SL2	8	12	28	M 5	M 5x16	5.5	4.5	1.5	8.5
KSC 0815SL2	8	15	30	M 6	M 6x15	7	6	1.5	9.5
KSC 1010SL2	10	10	30	M 4	M 4x12	4.5	3.75	1.5	9
KSC 1012SL2	10	12	30	M 5	M 5x16	5.5	4.5	1.5	9
KSC 1015SL2	10	15	35	M 6	M 6x18	7	6	1.5	11
KSC 1210SL2	12	10	30	M 4	M 4x12	4.5	3.75	1.5	10
KSC 1212SL2	12	12	30	M 5	M 5x16	5.5	4.5	1.5	10
KSC 1215SL2	12	15	35	M 6	M 6x18	7	6	1.5	11
KSC 1310SL2	13	10	30	M 4	M 4x12	4.5	3.75	1.5	10
KSC 1315SL2	13	15	35	M 6	M 6x18	7	6	1.5	11
KSC 1510SL2	15	10	32	M 4	M 4x12	4.5	3.75	1.5	11
KSC 1512SL2	15	12	35	M 5	M 5x16	5.5	4.5	1.5	12
KSC 1515SL2	15	15	40	M 6	M 6x20	7	6	1.5	13
KSC 1610SL2	16	10	35	M 4	M 4x12	4.5	3.75	1.5	12
KSC 1612SL2	16	12	35	M 5	M 5x16	5.5	4.5	1.5	12
KSC 1615SL2	16	15	40	M 6	M 6x20	7	6	1.5	13
KSC 2010SL2	20	10	40	M 4	M 4x16	4.5	3.75	1.5	14
KSC 2012SL2	20	12	40	M 5	M 5x16	5.5	4.5	1.5	14
KSC 2015SL2	20	15	45	M 6	M 6x20	7	6	1.5	15
KSC 2512SL2	25	12	45	M 5	M 5x16	5.5	4.5	1.5	17
KSC 2515SL2	25	15	50	M 6	M 6x25	7	6	1.5	18
KSC 3015SL2	30	15	55	M 6	M 6x25	7	6	1.5	20
KSC 3515SL2	35	15	60	M 6	M 6x25	7	6	2	23
KSC 4018SL2	40	18	70	M 8	M 8x30	9	7	2	26
KSC 5022SL2	50	22	85	M10	M10x35	11	9	3	32

Slit Type with two holes for fixing KSC-SL2



Order Method

Shaft Collar No. and Quantity



Postage

Same-day shipping



Precautions

* Since we also manufacture sizes other than those in the catalog upon request, please contact our company's sales office for details.

m Carbon Structural Steel

s Black Oxide Finish

i Comes with two bolts

	Y	Z	Side Hole φS	PCD	Ca	Cb	Mass (g)	¥
	4	6	3.5	13	0.5	0.3	16	
	4	6	3.5	13	0.5	0.3	20	
	5	9	4.5	16	0.5	0.5	25	
	5	9	4.5	18	0.5	0.5	31	
	5	10	5.5	18	0.5	0.5	47	
	5	10	5.5	20	0.5	0.5	68	
	5	11	5.5	20	0.5	0.5	43	
	5	11	5.5	20	0.5	0.5	52	
	6	12.5	6.6	24	0.5	0.5	91	
	5	11	5.5	22	0.5	0.5	41	
	5	11	5.5	22	0.5	0.5	49	
	6	12.5	6.6	24	0.5	0.5	87	
	5	11	4.5	22	0.5	0.5	40	
	6	12.5	6.6	24	0.5	0.5	85	
	6	11	4.5	24	0.5	0.5	43	
	6	13	5.5	26	0.5	0.5	65	
	8	13	6.6	28	0.5	0.5	111	
	6	13	4.5	25	0.5	0.5	52	
	6	13	5.5	26	0.5	0.5	63	
	8	13	6.6	28	0.5	0.5	109	
	7	15	5.5	30	0.5	0.5	65	
	7	15	5.5	30	0.5	0.5	78	
	8	15	6.6	34	0.5	0.5	131	
	7	18	5.5	36	0.5	0.5	91	
	10	18	6.6	38	0.5	0.5	151	
	10	—	6.6	44	1	0.5	171	
	12	—	6.6	48	1	0.5	191	
	13	—	9	56	1	0.5	319	
	16	—	11	68	1	0.5	558	