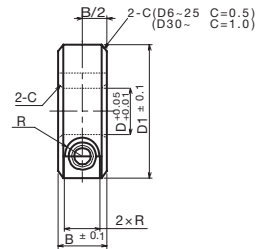
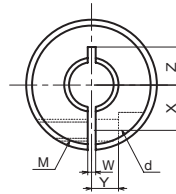


Shaft Collar <KSC-SL>

● Order No. Example

KSC0610SL

Shaft Collar No.




* Effective and accurate mounting can be done with the clamp that is used for positioning and fixing the sprocket and the timing pulley.

◇ List of Shaft Collar Sizes


Shaft Collar No.	Shaft Hole Diameter ϕD	Total Width $B \pm 0.1$	Outer Diameter $D1$	Bolt Hole M	Bolt $M \times$ Length	d	R	W	X	Y	Z	Mass (g)	¥
KSC 0308-SL	3	8	15	M 3	M3× 8	3.4	3	1	4.5	3	4.5	11	
KSC 0408-SL	4	8	15	M 3	M3× 8	3.4	3	1	4.5	3	4.5	10	
KSC 0508-SL	5	8	20	M 3	M3×10	3.4	3	1	6	4	7	18	
KSC 0510-SL	5	10	20	M 4	M4×10	4.5	3.75	1	6	4	6	22	
KSC 0608-SL	6	8	20	M 3	M3×10	3.4	3	1	6	4	6	17	
KSC 0610-SL	6	10	20	M 4	M4×10	4.5	3.75	1	6	4	6	22	
KSC 0808-SL	8	8	25	M 3	M3×10	3.4	3	1.5	8	5	7	27	
KSC 0810-SL	8	10	25	M 4	M4×12	4.5	3.75	1.5	8	5	9	33	
KSC 0812-SL	8	12	28	M 5	M5×16	5.5	4.5	1.5	8.5	5	10	51	
KSC 0815-SL	8	15	30	M 6	M6×15	7	6	1.5	9	5	10	73	
KSC 1010-SL	10	10	30	M 4	M4×12	4.5	3.75	1.5	9	5	11	47	
KSC 1012-SL	10	12	30	M 5	M5×16	5.5	4.5	1.5	9	5	11	56	
KSC 1015-SL	10	15	35	M 6	M6×18	7	6	1.5	10	6	12.5	99	
KSC 1210-SL	12	10	30	M 4	M4×12	4.5	3.75	1.5	10	5	11	63	
KSC 1212-SL	12	12	30	M 5	M5×16	5.5	4.5	1.5	10	5	11	53	
KSC 1215-SL	12	15	35	M 6	M6×18	7	6	1.5	11	6	12.5	95	
KSC 1310-SL	13	10	30	M 4	M4×12	4.5	3.75	1.5	10	5	11	43	
KSC 1315-SL	13	15	35	M 6	M6×18	7	6	1.5	11	6	12.5	93	
KSC 1510-SL	15	10	32	M 4	M4×12	4.5	3.75	1.5	11	6	11	47	
KSC 1512-SL	15	12	35	M 5	M5×16	5.5	4.5	1.5	12	6	13	70	
KSC 1515-SL	15	15	40	M 6	M6×20	7	6	1.5	13	8	13	120	
KSC 1610-SL	16	10	35	M 4	M4×12	4.5	3.75	1.5	12	6	13	57	
KSC 1612-SL	16	12	35	M 5	M5×16	5.5	4.5	1.5	12	6	13	68	

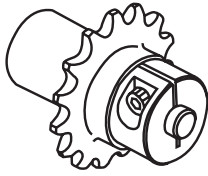
KSC-SL Slit Type



 Order Method

Shaft Collar No.


 and Quantity


 Use Examples




 Postage

Same-day shipping


Precautions

* Since we also manufacture sizes other than those in the catalog upon request, please contact our company's sales office for details.

- m Carbon Structural Steel
- s Black Oxide Finish
- i Comes with two set screws

◇List of Shaft Collar Sizes

Shaft Collar No.	Shaft Hole Diameter ϕD	Total Width $B \pm 0.1$	Outer Diameter D_1	Bolt Hole M	Bolt $M \times$ Length	d	R	W	X	Y	Z	Mass (g)	¥
KSC 1615-SL	16	15	40	M 6	M6×20	7	6	1.5	13	8	13	118	
KSC 1715-SL	17	15	40	M 6	M6×20	7	6	1.5	13	8	13	115	
KSC 1815-SL	18	15	45	M 6	M6×20	7	6	1.5	15	8	15	149	
KSC 2010-SL	20	10	40	M 4	M4×16	4.5	3.75	1.5	14	7	15	70	
KSC 2012-SL	20	12	40	M 5	M5×16	5.5	4.5	1.5	14	7	15	84	
KSC 2015-SL	20	15	45	M 6	M6×20	7	6	1.5	15	8	15	142	
KSC 2020-SL	20	20	45	M 6	M6×20	7	6	1.5	15	8	15	189	
KSC 2512-SL	25	12	45	M 5	M5×16	5.5	4.5	1.5	17	7	18	98	
KSC 2515-SL	25	15	50	M 6	M6×25	7	6	1.5	18	10	18	164	
KSC 3015-SL	30	15	55	M 6	M6×25	7	6	1.5	20	10	—	186	
KSC 3515-SL	35	15	60	M 6	M6×25	7	6	2	23	12	—	208	
KSC 4018-SL	40	18	70	M 8	M8×30	9	7	2	26	13	—	346	
KSC 4518-SL	45	18	75	M 8	M8×30	9	7	3	28	14	—	377	
KSC 5022-SL	50	22	85	M 10	M10×35	11	9	3	32	16	—	605	
KSC 5522-SL	55	22	90	M 10	M10×35	11	9	3	34	18	—	650	
KSC 6022-SL	60	22	95	M 10	M10×35	11	9	3	37	18	—	694	
KSC 6525-SL	65	25	105	M 12	M12×40	13	10	5	40	18	—	989	
KSC 7025-SL	70	25	110	M 12	M12×40	13	10	5	43	18	—	1047	
KSC 7525-SL	75	25	115	M 12	M12×40	13	10	5	45	20	—	1105	
KSC 8032-SL	80	32	130	M 16	M16×50	18	13	5	50	22	—	1954	
KSC 9032-SL	90	32	140	M 16	M16×50	18	13	5	55	24	—	2140	
KSC 10036-SL	100	36	150	M 16	M16×50	18	13	5	60	26	—	2617	
KSC 11036-SL	110	36	170	M 16	M16×50	18	13	5	70	28	—	3516	
KSC 12036-SL	120	36	180	M 16	M16×50	18	13	5	75	30	—	3768	