

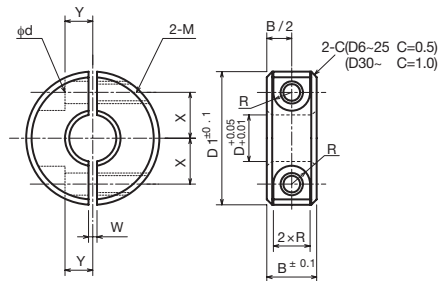
# Shaft Collar <KSC-SP>

## ● Order No. Example **KSC1215SP**

Shaft Collar No.



\* Effective and accurate mounting can be done with the clamp that is used for positioning and fixing the sprocket and the timing pulley.



### ◇ List of Shaft Collar Sizes

Shaft Collar No.	Shaft Hole Diameter $\phi D$	Total Width $B \pm 0.1$	Outer Diameter $D1$	Bolt Hole M	Bolt M x Length	d	R	W	X	Y	Mass (g)	¥
KSC 0308-SP	3	8	15	M 3	M 3× 8	3.4	3	1	4.5	3	10	
KSC 0408-SP	4	8	15	M 3	M 3× 8	3.4	3	1	4.5	3	9	
KSC 0508-SP	5	8	20	M 3	M 3×10	3.4	3	1	5.5	4	17	
KSC 0510-SP	5	10	20	M 4	M 4×10	4.5	3.75	1	6	4	21	
KSC 0608-SP	6	8	20	M 3	M 3×10	3.4	3	1	6	4	16	
KSC 0610-SP	6	10	20	M 4	M 4×10	4.5	3.75	1	6	4	20	
KSC 0808-SP	8	8	25	M 3	M 3×10	3.4	3	1.5	8	5	25	
KSC 0810-SP	8	10	25	M 4	M 4×12	4.5	3.75	1.5	8	5	31	
KSC 0812-SP	8	12	28	M 5	M 5×16	5.5	4.5	1.5	8	5	47	
KSC 0815-SP	8	15	30	M 6	M 6×15	7	6	1.5	9	5	68	
KSC 1010-SP	10	10	30	M 4	M 4×12	4.5	3.75	1.5	9	5	43	
KSC 1012-SP	10	12	30	M 5	M 5×16	5.5	4.5	1.5	9	5	52	
KSC 1015-SP	10	15	35	M 6	M 6×14	7	6	1.5	10	6	91	
KSC 1210-SP	12	10	30	M 4	M 4×12	4.5	3.75	1.5	10	5	41	
KSC 1212-SP	12	12	30	M 5	M 5×16	5.5	4.5	1.5	10	5	49	
KSC 1215-SP	12	15	35	M 6	M 6×18	7	6	1.5	11	6	87	
KSC 1310-SP	13	10	30	M 4	M 4×12	4.5	3.75	1.5	10	5	40	
KSC 1315-SP	13	15	35	M 6	M 6×18	7	6	1.5	11	6	85	
KSC 1510-SP	15	10	32	M 4	M 4×12	4.5	3.75	1.5	11	6	43	
KSC 1512-SP	15	12	35	M 5	M 5×16	5.5	4.5	1.5	12	6	65	
KSC 1515-SP	15	15	40	M 6	M 6×20	7	6	1.5	13	8	111	
KSC 1610-SP	16	10	35	M 4	M 4×12	4.5	3.75	1.5	12	6	52	
KSC 1612-SP	16	12	35	M 5	M 5×16	5.5	4.5	1.5	12	6	63	

## KSC-SP Split Type



Order Method

Shaft Collar No. and Quantity



Use Examples



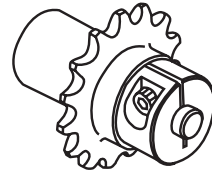
Postage

Same-day shipping



Precautions

\* Since we also manufacture sizes other than those in the catalog upon request, please contact our company's sales office for details.

**m** Carbon Structural Steel**s** Black Oxide Finish**i** Comes with two bolts

Shaft Collar No.	Shaft Hole Diameter $\phi D$	Total Width $B_{\pm 0.1}$	Outer Diameter $D_1$	Bolt Hole M	Bolt M x Length	d	R	W	X	Y	Mass (g)	¥
KSC 1615-SP	16	15	40	M 6	M 6x20	7	6	1.5	13	8	109	
KSC 1715-SP	17	15	40	M 6	M 6x20	7	6	1.5	13	8	106	
KSC 1815-SP	18	15	45	M 6	M 6x20	7	6	1.5	15	8	137	
KSC 2010-SP	20	10	40	M 4	M 4x16	4.5	3.75	1.5	14	7	65	
KSC 2012-SP	20	12	40	M 5	M 5x16	5.5	4.5	1.5	14	7	78	
KSC 2015-SP	20	15	45	M 6	M 6x20	7	6	1.5	15	8	131	
KSC 2512-SP	25	12	45	M 5	M 5x16	5.5	4.5	1.5	17	7	91	
KSC 2515-SP	25	15	50	M 6	M 6x25	7	6	1.5	18	10	151	
KSC 3015-SP	30	15	55	M 6	M 6x25	7	6	1.5	20	10	171	
KSC 3515-SP	35	15	60	M 6	M 6x25	7	6	2	23	12	191	
KSC 4018-SP	40	18	70	M 8	M 8x30	9	7	2	26	13	319	
KSC 4518-SP	45	18	75	M 8	M 8x30	9	7	3	28	14	348	
KSC 5022-SP	50	22	85	M 10	M10x35	11	9	3	32	16	558	
KSC 5522-SP	55	22	90	M 10	M10x35	11	9	3	34	18	599	
KSC 6022-SP	60	22	95	M 10	M10x35	11	9	3	37	18	640	
KSC 6525-SP	65	25	105	M 12	M12x40	13	10	5	40	18	911	
KSC 7025-SP	70	25	110	M 12	M12x40	13	10	5	43	18	965	
KSC 7525-SP	75	25	115	M 12	M12x40	13	10	5	45	20	1019	
KSC 8032-SP	80	32	130	M 16	M16x50	18	13	5	50	22	1801	
KSC 9032-SP	90	32	140	M 16	M16x50	18	13	5	55	24	1972	
KSC 10036-SP	100	36	150	M 16	M16x50	18	13	5	60	26	2412	
KSC 11036-SP	110	36	170	M 16	M16x50	18	13	5	70	28	3241	
KSC 12036-SP	120	36	180	M 16	M16x50	18	13	5	75	30	3473	