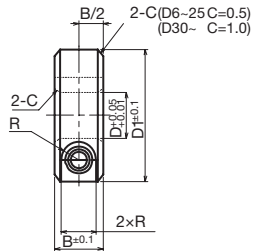
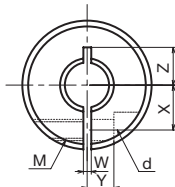





Shaft Collar <SSC-SL>

● Order No. Example **SSC0815SL**

Shaft Collar No.



 Stainless Steel  304
 Comes with one bolt

◇List of Shaft Collar Sizes

Shaft Collar No.	Shaft Hole Diameter ϕD	Total Width $B \pm 0.1$	Outer Diameter $D1$	Bolt Hole M	Bolt $M \times$ Length	d	R	W	X	Y	Z	Mass (g)	¥
SSC 0510-SL	5	10	20	M 4	M4×10	4.5	3.75	1	6	4	6	22	
SSC 0610-SL	6	10	20	M 4	M4×10	4.5	3.75	1	6	4	6	22	
SSC 0810-SL	8	10	25	M 4	M4×12	4.5	3.75	1.5	8	5	9	33	
SSC 0815-SL	8	15	30	M 6	M6×15	7	6	1.5	9	5	10	74	
SSC 1010-SL	10	10	30	M 4	M4×12	4.5	3.75	1.5	9	5	11	47	
SSC 1015-SL	10	15	35	M 6	M6×18	7	6	1.5	10	6	12.5	99	
SSC 1210-SL	12	10	30	M 4	M4×12	4.5	3.75	1.5	10	5	11	45	
SSC 1215-SL	12	15	35	M 6	M6×18	7	6	1.5	11	6	12.5	95	
SSC 1310-SL	13	10	30	M 4	M4×12	4.5	3.75	1.5	10	5	11	43	
SSC 1315-SL	13	15	35	M 6	M6×18	7	6	1.5	11	6	12.5	93	
SSC 1512-SL	15	12	35	M 5	M5×16	5.5	4.5	1.5	12	6	13	71	
SSC 1515-SL	15	15	40	M 6	M6×20	7	6	1.5	13	8	13	121	
SSC 1612-SL	16	12	35	M 5	M5×16	5.5	4.5	1.5	12	6	13	69	
SSC 1615-SL	16	15	40	M 6	M6×20	7	6	1.5	13	8	13	119	
SSC 2012-SL	20	12	40	M 5	M5×16	5.5	4.5	1.5	14	7	15	85	
SSC 2015-SL	20	15	45	M 6	M6×20	7	6	1.5	15	8	15	143	
SSC 2512-SL	25	12	45	M 5	M5×16	5.5	4.5	1.5	17	7	18	99	
SSC 2515-SL	25	15	50	M 6	M6×25	7	6	1.5	18	10	18	165	
SSC 3015-SL	30	15	55	M 6	M6×25	7	6	1.5	20	10	—	187	
SSC 3515-SL	35	15	60	M 6	M6×25	7	6	2	23	12	—	209	
SSC 4018-SL	40	18	70	M 8	M8×30	9	7	2	26	13	—	348	
SSC 4518-SL	45	18	75	M 8	M8×30	9	7	3	28	14	—	380	
SSC 5022-SL	50	22	85	M 10	M10×35	11	9	3	32	16	—	609	

SSC-SL Stainless Slit Type



Order Method

Shaft Collar No. and Quantity



Use Examples



Postage

Same-day shipping



Precautions

* Since we also manufacture sizes other than those in the catalog upon request, please contact our company's sales office for details.

