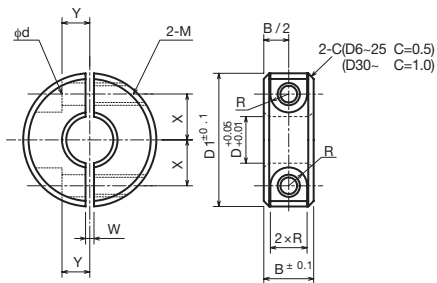





Shaft Collar <SSC-SP>

● Order No. Example **SSC1215SP**

Shaft Collar No.



 Stainless Steel  304
 Comes with two bolts

◇List of Shaft Collar Sizes

Shaft Collar No.	Shaft Hole Diameter ϕD	Total Width $B \pm 0.1$	Outer Diameter $D1$	Bolt Hole M	Bolt $M \times$ Length	d	R	W	X	Y	Mass (g)	¥
SSC 0510-SP	5	10	20	M 4	M 4×10	4.5	3.75	1	6	4	21	
SSC 0610-SP	6	10	20	M 4	M 4×10	4.5	3.75	1	6	4	20	
SSC 0810-SP	8	10	25	M 4	M 4×12	4.5	3.75	1.5	8	5	31	
SSC 0815-SP	8	15	30	M 6	M 6×15	7	6	1.5	9	5	68	
SSC 1010-SP	10	10	30	M 4	M 4×12	4.5	3.75	1.5	9	5	44	
SSC 1015-SP	10	15	35	M 6	M 6×18	7	6	1.5	10	6	92	
SSC 1210-SP	12	10	30	M 4	M 4×12	4.5	3.75	1.5	10	5	41	
SSC 1215-SP	12	15	35	M 6	M 6×18	7	6	1.5	11	6	88	
SSC 1310-SP	13	10	30	M 4	M 4×12	4.5	3.75	1.5	10	5	40	
SSC 1315-SP	13	15	35	M 6	M 6×18	7	6	1.5	11	6	86	
SSC 1512-SP	15	12	35	M 5	M 5×16	5.5	4.5	1.5	12	6	65	
SSC 1515-SP	15	15	40	M 6	M 6×20	7	6	1.5	13	8	112	
SSC 1612-SP	16	12	35	M 5	M 5×16	5.5	4.5	1.5	12	6	63	
SSC 1615-SP	16	15	40	M 6	M 6×20	7	6	1.5	13	8	35	
SSC 2012-SP	20	12	40	M 5	M 5×16	5.5	4.5	1.5	14	7	40	
SSC 2015-SP	20	15	45	M 6	M 6×20	7	6	1.5	15	8	132	
SSC 2512-SP	25	12	45	M 5	M 5×16	5.5	4.5	1.5	17	7	91	
SSC 2515-SP	25	15	50	M 6	M 6×25	7	6	1.5	18	10	152	
SSC 3015-SP	30	15	55	M 6	M 6×25	7	6	1.5	20	10	173	
SSC 3515-SP	35	15	60	M 6	M 6×25	7	6	2	23	12	193	
SSC 4018-SP	40	18	70	M 8	M 8×30	9	7	2	26	13	321	
SSC 4518-SP	45	18	75	M 8	M 8×30	9	7	3	28	14	350	
SSC 5022-SP	50	22	85	M10	M10×35	11	9	3	32	16	562	

SSC-SP Stainless Split Type



Order Method

Shaft Collar No. and Quantity



Use Examples



Postage

Same-day shipping



Precautions

* Since we also manufacture sizes other than those in the catalog upon request, please contact our company's sales office for details.

