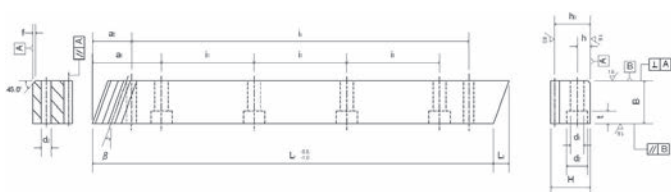


Carburized Tooth-Ground Rack

- ☆ KANA Standard Tooth-Ground Helical/Straight Rack with Case-Hardened Specification
- ☆ Both silent and high-strength, and can be used for high-accuracy positioning

Specifications		
	Helical	Straight
Precision Degree	JIS Class 1 Equivalent	
Tooth Type	Full Depth Tooth	
Tooth Right Angle/Pressure angle	20°	
Gear Reference Surface	Tooth Right Angle	-
Torsion Angle	19°31'42" Left	-
Material	SCM415	
Heat Treatment	Case-Hardened	
Tooth Surface Hardness	HRC55 - 60	

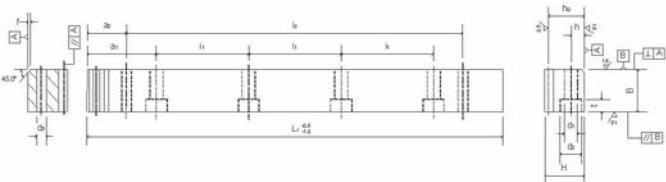
- ◎ Tooth Surface Ground Finish
- ◎ Base Material 4 Surfaces Ground Finish
- ◎ Cumulative pitch error is 15µm or below
- * The torsion angle and torsion direction (left/right) can be freely set



KANA Standard Tooth-Ground Helical Rack (first in Japan)

(Deviation Unit of mm)

Module	No. of Teeth	Workpiece Width	Workpiece Height	Engagement Height	Stroke	Edge Length	Mounting Hole Position	Mounting Hole Pitch	Mounting Prepared Hole	Counterbore	Counterbore Depth	Hole Position	Pin Hole Position	Pin Hole Pitch	Pin Hole Diameter	Chamfering Amount	Unit Weight
M	Z	B	H	h_0	L_1	L_2	a_1	i_1	d_1	d_2	t	h_d	a_2	i_2	d_3	f	kg
1	150	14	19	18	500	5.0	60.0	125	5	9	5	7	20	455.0	4.7	2	1.0
2	75	24	24	22	500	8.5	58.2		7	11	7	8		451.5	5.7		2.0
3	50	29	29	26	500	10.3	57.4		10	15	9	9		449.7	7.7		2.9
4	36	39	39	35	480	13.8	45.6		12	18	11	12		426.2	9.7		5.0
5	30	49	49	44	500	17.4	53.8		14	20	13	14		442.6	11.7		8.2



KANA Standard Tooth-Ground Straight Rack

(Dimension Unit mm)

Module	No. of Teeth	Workpiece Width	Workpiece Height	Engagement Height	Stroke	Mounting Hole Position	Mounting Hole Pitch	Prepared Hole Mounting	Counterbore	Counterbore Depth	Hole Position	Pin Hole Position	Pin Hole Pitch	Pin Hole Diameter	Chamfering Amount	Unit Weight
M	Z	B	H	h_0	L_1	a_1	i_1	d_1	d_2	t	h_d	a_2	i_2	d_3	f	kg
1	159	10	15	14	499.51	39.8	140	4.5	8	5	6	-	-	-	2	0.54
2	80	20	25	23	502.65	41.3	140	7	11	7	10	-	-	-	2	1.77
3	53	30	35	32	499.51	39.8	140	11	17.5	11	14	-	-	-	2	3.59
4	40	40	45	41	502.65	41.3	140	14	20	13	18	-	-	-	2	6.21
5	32	50	50	45	502.65	41.3	140	16	23	15	20	-	-	-	2	8.56