

# SUS Idler Pin

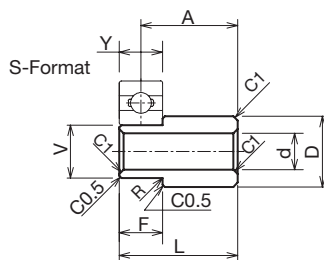
## Order No. Example

### SUSIDP6000S A12 B30

Pin No.

Selection A

Selection B



Used for attaching the (stainless steel) idler sprocket.

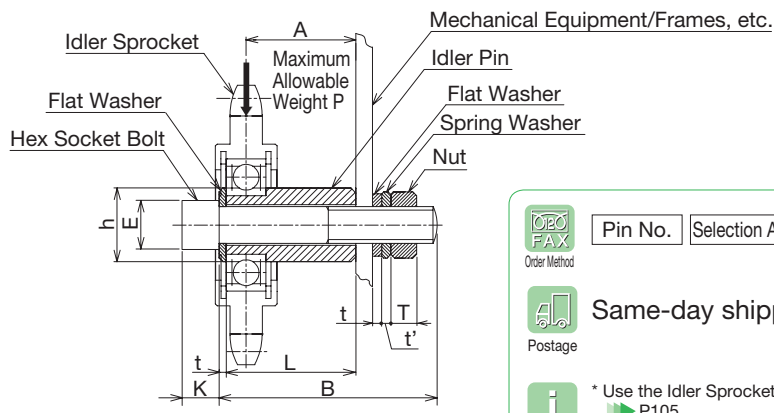
You can choose from a wide range of sizes best suited to the mounting position.


Allows a space-saving design with nothing wasted.

 Stainless Steel  304


Pin No.	Selection A	Selection B	Compatible Bearings	Max. Permissible Load (N/kgf)	Weight (g)	¥	Applicable Idler Sprockets	
SUS IDP 6000S	A12	30 35 40	6000ZZ (width Y=8)	250 {26}	29		SUSID35C16D10 SUSID40C13D10	
	A14	35 40 45			34			
	A16	40 45 50			39			
	A18	45 50 55			43			
	A20	50 55 60			48			
	6001S	A14	35 40 45	6001ZZ (width Y=8)	459 {47}	29		SUSID35C16D12 SUSID40C13D12
		A16	40 45 50			33		
		A18	45 50 55			38		
		A20	50 55 60			42		
		A22	55 60 65			46		
6201S	A14	35 40 45	6201ZZ (width Y=10)	459 {47}	29		SUSID50C12D12 SUSID60C11D12	
	A16	40 45 50			33			
	A18	45 50 55			38			
	A20	50 55 60			42			
	A22	55 60 65			46			
6202S	A16	45 50 55	6202ZZ (width Y=11)	718 {73}	51		SUSID35C18D15 SUSID40C15D15 SUSID50C13D15 SUSID60C11D15 SUSID80C9D15	
	A18	50 55 60			58			
	A20	55 60 65			64			
	A22	60 65 70			71			
	A24	65 70 75			77			
6203S	A16	45 50 55	6203ZZ (width Y=12)	718 {73}	91		SUSID35C21D17 SUSID40C17D17 SUSID50C15D17 SUSID60C13D17 SUSID80C10D17	
	A18	50 55 60			103			
	A20	55 60 65			114			
	A22	60 65 70			126			
	A24	65 70 75			137			
6204S	A20	55 60 65	6204ZZ (width Y=14)	1427 {146}	92		SUSID35C25D20 SUSID40C19D20 SUSID50C17D20 SUSID60C14D20 SUSID80C11D20	
	A22	60 65 70			101			
	A24	65 70 75			110			
	A26	70 75 80			120			
	A28	75 80 85			129			
	A30	80 85 90			138			

## For SUS IDP(S) Single





 **Order Method**


Pin No.   and Quantity

 **Postage**

**Same-day shipping**

 **Guide**

\* Use the Idler Sprocket.  P105



	Pin No.	Selection A	Selection B	Pin Body Size							Bolt Washer Size						
				L	F	V	D	d	R Max	M	K	E	T	t	t'	h	
SUS	6000S	A12	30 35 40	15.8													
		A14	35 40 45	17.8													
		A16	B 35 40 45	19.8	7.8	10	16	6.2	0.3	M 6	6	10	5	1.6	1.5	12.5	
		A18	40 45 50	21.8													
		A20	40 45 50	23.8													
SUS	6001S	A14	35 40 45	17.8													
		A16	40 45 50	19.8													
		A18	B 40 45 50	21.8	7.8	12	16	8.2	0.3	M 8	8	13	6.5	1.6	2	17	
		A20	40 45	23.8													
		A20	50	23.8													
SUS	6201S	A14	35 40 45	18.8													
		A16	40 45 50	20.8													
		A18	B 40 45 50	22.8	9.8	12	16	8.2	0.6	M 8	8	13	6.5	1.6	2	17	
		A20	45 50 55	24.8													
		A22	45	26.8													
IDP	6202S	A16	45 50 55	21.3													
		A18	45 50 55	23.3													
		A20	B 45 50 55	25.3	10.8	15	20	10.5	0.6	M10	10	16	8	2	2.5	21	
		A22	50 55 60	27.3													
		A24	50 55 60	29.3													
IDP	6203S	A16	45 50 55	21.8													
		A18	45 50 55	23.8													
		A20	B 50 55 60	25.8	11.8	17	25	10.5	0.6	M10	10	16	8	2	2.5	21	
		A22	50 55 60	27.8													
		A24	50 55 60	29.8													
IDP	6204S	A20	55 60 65	26.8													
		A22	55 60 65	28.8													
		A24	B 60 65 70	30.8	13.8	20	25	14.5	1	M14	14	21	11	2.5	3.5	28	
		A26	60 65 70	32.8													
		A28	65 70 75	34.8													
		A30	65 70 75	36.8													