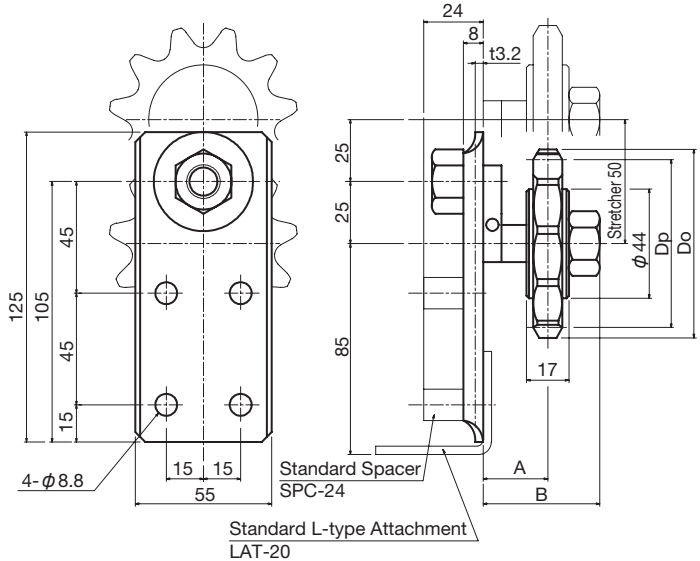


# Tight-Holder THB Series

## ● Order Product Code

### THB35

Tight-Holder No.



Use of an eccentric pin on this chain tensioner enables severe adjustments to be performed with ease. We recommend use of Tight-Holder to increase chain transmission efficiency and maintain the service life of the chain.

### ◇ THB (w/ Standard Idler Sprocket)

Tight-Holder No.	Applicable Roller Chains	Idler Sprockets		A	B	Weight (kg)
		Do	Dp			
THB 35	JIS35	60	54.85	26	47	0.56
THB 40	JIS40	67	61.08	26	47	0.59
THB 50	JIS50	74	66.34	26	47	0.63
THB 60	JIS60	76	67.62	26	47	0.67
THB 80	JIS80	85	74.26	30	51	0.78



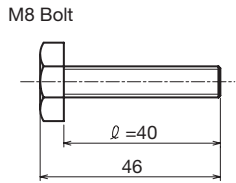
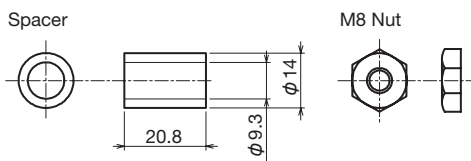
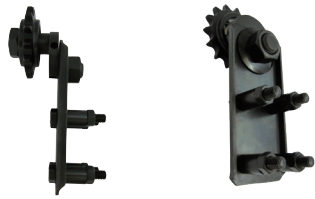
\* The allowable load of the L-type attachment is used for the Idler Sprocket. This is max. 40 kg. with a vertical load.

Caution

◇ Spacer SPC-24 Set Product

● Order Product Code  
**THB35SPC**

w/ Spacer No.



◇ Spacer Only

● Order Product Code  
**SPC-24**

Spacer No.

Spacer No.  
SPC-24



◇ Tight-Holder w/ Spacer

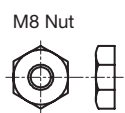
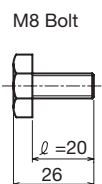
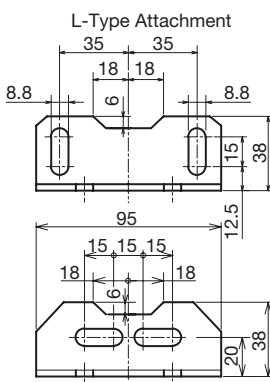
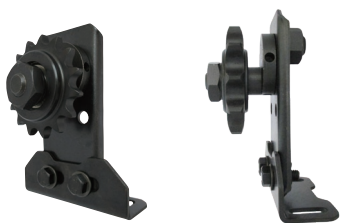
Tight-Holder w/ Spacer No.

- THB 35 SPC
- THB 40 SPC
- THB 50 SPC
- THB 60 SPC
- THB 80 SPC

◇ L-Type Attachment LAT-20 Set Product

● Order Product Code  
**THB35LAT**

w/ L-Type Attachment No.



◇ L-Type Attachment Only

● Order Product Code  
**LAT-20**

L-Type Attachment No.

L-Type Attachment No.  
LAT-20



◇ Tight-Holder w/ L-Type Attachment

Tight-Holder L-Type with Attachment No.

- THB 35 LAT
- THB 40 LAT
- THB 50 LAT
- THB 60 LAT
- THB 80 LAT