

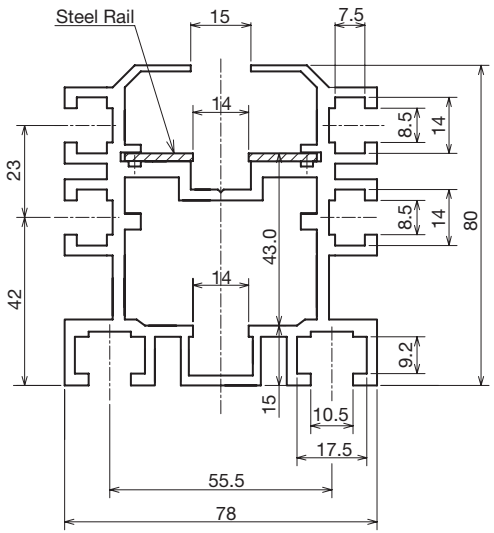
# Triple Speed/Carrier Chains

● Order No.

**CZ5AFS**

Aluminum Frame No.

◇ Aluminum Frame with steel rail for use with Triple Speed/Carrier Chain  
(For use with steel rollers and plastic rollers)



CZ5/CY5 Dedicated Aluminum Frame

Aluminum Frame No.	Length/Unit	Material	¥
<b>CZ5AFS</b>	4m	 A6063S T5	

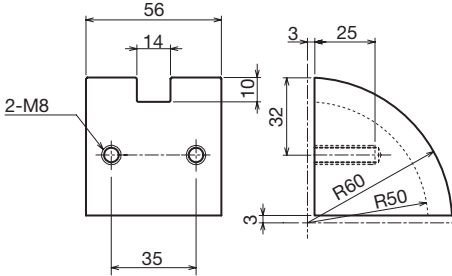
! Steel rails, end plates, and cylindrical rollers are included.

## 5-Type Aluminum Frame Series

● Order No.  
**CZ5RGPE**

Return Guide No.

◇ Return Guide



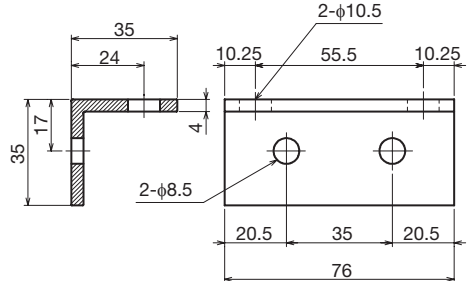
Compatible Aluminum Frames: CZ5AFS

Return Guide No.	Material	¥
<b>CZ5RGPE</b>	UHMW Polyethylene	

● Order No.  
**CZ5GBAL**

Guide Bracket No.

◇ Guide Bracket



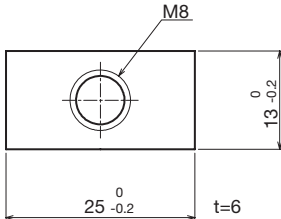
Compatible Aluminum Frames: CZ5AFS

Guide Bracket No.	Material	¥
<b>CZ5GBAL</b>	Aluminum Angle Bar A6063 T5	

● Order No.  
**M8NT25**

Nut. No.

◇ M8 Long Nut (UniChrome plating included)



Nut. No.	¥
<b>M8NT25</b>	

Order Method	Aluminum Frame No.	and Quantity	Same-day shipping	Length Limit for Packing/Single Items
	Return Guide No.		Postage	
	Guide Bracket No.		Guide	* EPV6 Plastic Rail ▶▶ P391
	Nut. No.			