

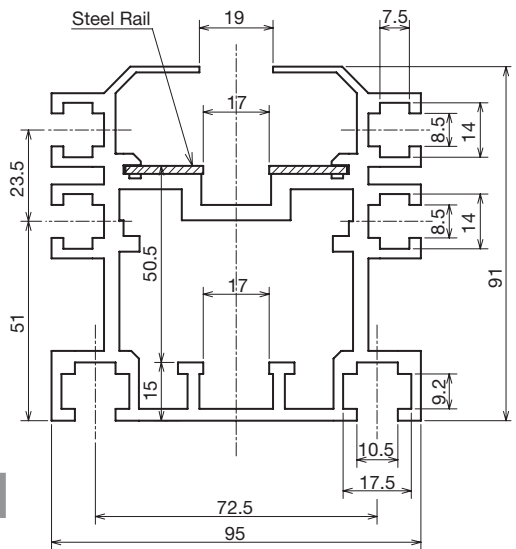
Triple Speed/Carrier Chains

● Order No.

CZ6AFS

Aluminum Frame No.

- ◇ Aluminum Frame with steel rail for use with Triple Speed/Carrier Chain
(For use with steel rollers and plastic rollers)



CZ6/CY6 Dedicated Aluminum Frame

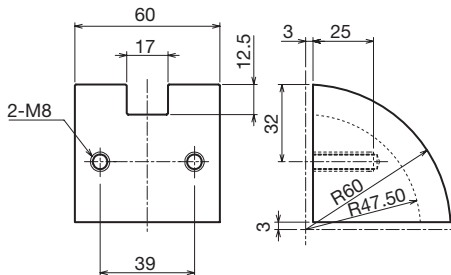
| Aluminum Frame No. | Length/Unit | Material | ¥ |
|--------------------|-------------|---|---|
| CZ6AFS | 4m |  A6063S T5 | |

! Steel rails, end plates, and cylindrical rollers are included.

6-Type Aluminum Frame Series

● Order No.
CZ6RGPE
 Return Guide No.

◇ Return Guide

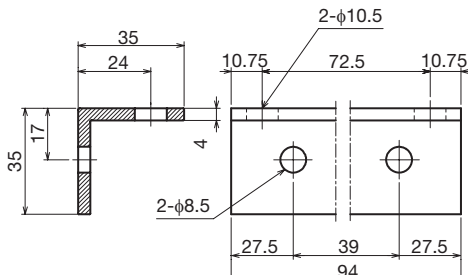


Compatible Aluminum Frames: CZ6AFS

| Return Guide No. | Material | ¥ |
|------------------|-------------------|---|
| CZ6RGPE | UHMW Polyethylene | |

● Order No.
CZ6GBAL
 Guide Bracket No.

◇ Guide Bracket

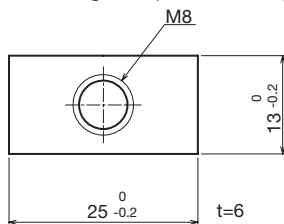


Compatible Aluminum Frames: CZ6AFS

| Guide Bracket No. | Material | ¥ |
|-------------------|-----------------------------|---|
| CZ6GBAL | Aluminum Angle Bar A6063 T5 | |

● Order No.
M8NT25
 Nut. No.

◇ M8 Long Nut (UniChrome plating included)



| Nut. No. | ¥ |
|---------------|---|
| M8NT25 | |



Aluminum Frame No.

Return Guide No.

Guide Bracket No.

Nut. No.

and Quantity



Postage

Same-day shipping



Length Limit for Packing Single Items



Guide

* EPV6 Plastic Rail
 ▶▶ P391